

No. DES 15 OF 2006



GOVERNMENT OF KARNATAKA

**REPORT
ON
MEDICAL CERTIFICATION OF
CAUSE OF DEATH
2003**



**Office of the Chief Registrar of Births & Deaths
and
Directorate of Economics & Statistics
Bangalore**

PREFACE

Statistics is an important tool in decision-taking and evolving long term policy in the plan formulations. For the latter, proper documentation, preservation and dissemination of information should be continuous and adequate. Mortality Statistics can serve both the purposes. The Scheme of Medical Certification of Cause of Death is a very reliable source of Mortality Statistics and a tool to determine the causes of death by qualified persons with sufficient knowledge about ailments of the deceased. This scheme has been inter-woven into the Civil Registration System with the long term perspective plan of covering all the events of deaths as and when infrastructure matches with the workload.

To begin, with the scheme was restricted to teaching, district and specialized hospitals and later has been extended to cities with a population of more than one lakh and bed strength of 20 & above, in Karnataka. Further, the Registrar General of India has envisaged its implementation in all the Government as well as private Hospitals and Nursing Homes in urban and rural areas of the state.

The data flowing from this report is the 23rd in series providing cause profile of mortality mostly in urban parts of the State. Interest and response shown in the scheme by authorities of 901 hospitals was laudable. My sincere gratitude to all those closely associated with this study. Their continued co-operation will be a strength in this endeavor.

The Data was processed in the Division dealing with Civil Registration, National Sample Survey and Local Bodies Statistics. This report is the product of hard work of the staff working in the concerned section, in particular Smt. Yashoda, Statistical Inspector.

Suggestions for improvement are most welcome.

G. Prakasam

Director and Chief Registrar of
Births and Deaths

Bangalore,

Dated: **7.6.2006**

TEAM INVOLVED IN THE PUBLICATION OF THIS REPORT

- | | |
|---|---|
| <i>1. Sri. B.H. NARAYANA SWAMY</i> | <i>JOINT DIRECTOR</i> |
| <i>2. Sri. K. JAYARAM</i> | <i>DEPUTY CHIEF REGISTRAR</i> |
| <i>3. Sri. G.TULASI RAM</i> | <i>ASSISTANT CHIEF REGISTRAR</i> |
| <i>4. Smt. G.VANAJAKSHI</i> | <i>ASSISTANT STATISTICAL OFFICER</i> |
| <i>5. Smt. N.YASHODA</i> | <i>STATISTICAL INSPECTOR</i> |
| <i>6. Kum. R. DAKSHAYINI</i> | <i>ENUMERATOR</i> |

CONTENTS

	PAGE NOs.
1 INTRODUCTION	1
2 OBJECTIVES	2
3 COVERAGE	2
4 LIMITATIONS OF THE CIVIL REGISTRATION SYSTEM	3
5 FLOW OF DATA & PROCESSING	3
6 IMPORTANT FINDINGS	4
6.1 DISTRIBUTION OF HOSPITALS COVERED BY CATEGORY & BED STRENGTH	4
6.2 DISTRICTWISE AND SEXWISE DISTRIBUTION OF DEATHS	4
6.3 DEATHS BY MAJOR CAUSE GROUPS	4
6.4 MORTALITY BY SEX	5
6.5 GROUPWISE LEADING CAUSES OF DEATHS	6-11
6.6 PRINCIPAL INDIVIDUAL CAUSES	11
6.7 DEATHS BY AGE & SEX	12
6.8 LEADING CAUSES OF INFANT DEATHS	13
6.9 LEADING CAUSES OF MATERNAL DEATHS	13
7 CONCLUSION	14
8 STATISTICAL STATEMENTS & GRAPHS	15-60
9 ANNEXURE	61

.....#.....

MEDICAL CERTIFICATION OF CAUSES OF DEATH-2003

Introduction

New types of killer diseases are raising their ugly heads and ringing warning bells. These are Cancer, Aids, and Heart Diseases, Juvenile diabetics, non-communicable diseases, etc. Medical research is facing stiff challenges from the spread of a variety of ailments. For tackling these issues, good documentation of information on the causes of death is indispensable. Recognising this fact and in order to draw the profile of different natural and man made causes of death, the International Community of Medical Professionals, under the aegis of World Health Organisation, have codified most of the diseases labelling them “International Classification of Diseases”.

This International Classification of Diseases is customized to the Indian conditions under the scheme of **Medical Certification of Causes of Death**. Important demographic indicators like Infant Mortality Rate, Maternal Mortality Rate & Child Mortality Rate can be derived from this.

This report is based on the tenth revision of International Classification of Diseases. The prescribed Form No 4 (Annexure) has to be carefully filled by the physician who examines/attends/treats the deceased during the period of his/her last illness. This form, which clearly spells out the various causes of death is the pivot of this survey results.

1.1. Provision in the Registration of Births & Deaths Act, 1969.

This Act contains a section regarding compulsory Medical Certification. Section 10(3) of the Act (given below) read with Rule (7) of the Karnataka Registration of Births & Deaths Rules, 1999 have made a provision for this. These together enable the State to obtain from the medical practitioner/physician who attended the deceased during his/her last illness, a certificate, free of cost, as to **the underlying & immediate causes of death**.

Section 10(3) of the RBD Act, 1969: “Where the State Government as required under Sub-Section (2) that a certificate as to the cause of death shall be obtained, in the event of the death of any person who, during his/her last illness, was attended by a medical practitioner, the medical practitioner shall, after the death of that person, forthwith issue without any fee, to the person required under this Act to give information concerning the death, a certificate in the prescribed form stating to the best of his knowledge & belief the cause of death; & the certificate shall be received & delivered by such person to the Registrar at the time of giving

information concerning the death as required by this Act”. The Act has also a **clause incorporated for maintaining confidentiality of the information on cause of deaths, available in the registration records.** With Karnataka Registration of Births and Deaths Rules, 1970 being replaced by Karnataka Registration of Births and Deaths Rules, 1999, Form 8 has been replaced by Form 4.

1.2 Meaning & scope of cause of death

The term “cause of death” has been defined as to go back to the root/underlying cause. It is “the morbid condition to which can be traced the sequence of events ultimately resulting in death”. It is this underlying cause which is the key element, particularly, if a number of ailments had affected the deceased prior to his death. The form prescribed for certification has two parts, part-1, for recording the diseases suffered by the deceased in a specific sequence to facilitate segregation of the underlying cause from the immediate cause and part-2 for other significant morbid conditions, even, if they were not responsible for the death (Annexure). The report of the inquesting authorities is given preference in case of unnatural deaths leading to medico-legal cases.

2. Objectives

The objectives of the scheme are:

- (i) To obtain mortality profile by causes, age & sex.
- (ii) To study external/unnatural causes.
- (iii) To study causes of infant & maternal mortality.

3. Coverage

For the first time, in 1967, the scheme was introduced in 44 hospitals. It was extended to 168 hospitals by 1990. 352 hospitals with a bed-strength of 20 or more in towns & cities with a lakh or more population (as per 1981 census) were covered in 1991. This expansion was taken up as per the recommendations of the workshop on “Statistics of Cause of Death” held during 1986 at New Delhi. In the next phase of coverage as per suggestion of the Registrar General of India, the scheme has been implemented in all the Government Hospitals and all Private Hospitals, Nursing Homes in urban areas of the state. By 2003, 901 hospitals have been brought in compared to 457 in 2002, an increase of 97.16 per cent. Correspondingly, the number of events covered has gone up from 64022 to 81186 between 2002 and 2003, by more than a quarter. The scheme’s ambit is confined mostly to

institutional deaths. Though the sample is representative, sweeping generalisations are not recommended, since a large number of rural events remain outside the ambit of the survey.

The National list for tabulation of Morbidity and Mortality based on the Tenth revision of International Classification of Diseases (ICD-10), 1999 has been adopted. In this list 20 Major groups, 69 categories and 193 sub-categories of causes have been identified. However, only 19 Major groups were considered as the twentieth group Viz., External causes of morbidity and mortality permits the classification of environmental events and circumstances as the cause of injury, poisoning and other adverse effects.

4. Limitations of the Civil Registration System

The registration of deaths based on the returns (institutional and medical attention other than institution confined to urban areas) received during 2003 was 77.21 per cent of the number of deaths (1,05,147) in the state. Moreover, adequate infrastructure is not available in rural areas for implementing the scheme. Even among the deaths reported, causes are not always mentioned. Overcoming these limitations, attempts have been made to attain the objectives. The district wise classification is based on the “Usual residence of the deceased and not on the basis of place of the deceased’s last admission/treatment”.

5. Flow of data and processing

The certificates cause(s) of death certified by the doctors were sent in the prescribed Form (No 4) directly from the selected institutions on a monthly basis to this directorate. They were scrutinised & coded as per the International Classification of Diseases, 10th Revision & Table-8 derived as per the national list prescribed/designed by the Registrar General, India. Data was processed at the in house computer centre of the CNL Division of the Directorate.

The report contains 10 tables. Table 1 presents number of hospitals covered by type and bed strength. Table 2 gives districtwise and sexwise deaths. In Table 3, number of medically certified deaths in major cause groups (according to ICD-10) by sex. Table 4 gives a picture of principal causes of deaths along with the percentage distribution in the descending order. Table 5 depicts the number of deaths by age and sex. Table 6 provides leading causes of infant deaths by sex in the descending order. Table 7 is a depiction of leading causes of maternal deaths (in a descending order). Table 8 gives the number of deaths due to individual diseases cross classified by age group and sex and in Table 9 a time series data on the percentage distribution of seven most leading major causes of deaths for the last 11 years have been drawn. Data users are advised to keep in mind the incomplete coverage of

deaths by the medical certification under the civil registration system and as such be cautious in deducing the mortality pattern based on information in this table. Table 10 presents a time series data on medical certification of cause of death for the years 1993 to 2003.

Based on the information of these tables, important findings are narrated in the following paragraphs.

6. Important Findings.

6.1 DISTRIBUTION OF HOSPITALS COVERED BY CATEGORY & BED-STRENGTH (*Table – 1*).

- Out of 901 hospitals, the coverage was; General hospitals 66.59 per cent, Maternity homes and Paediatric centres 20.86 per cent, Teaching hospitals 3.33 per cent followed by Pediatric 2.77 per cent and Tuberculosis hospitals, 1.11 per cent
- Hospitals with bed-strength less than 100 have the largest share of 78.02 per cent and the least share of 0.55 per cent was those of with bed-strength 401-500. Percentage shares of hospitals with bed-strength 101-200, 201-300, 301-400 and more than 500 4.0, 2.33, 1.11 and 2.33.

6.2 DISTRICTWISE AND SEXWISE DISTRIBUTION OF DEATHS (*Table – 2*).

- Total number of deaths reported are 81186 of which deaths of males are 52406 (64.55 per cent) and of females 28780 (35.45 per cent)
- 356 hospitals of Bangalore (urban) district had reported 21340 deaths covering 39.5 per cent of total hospitals and 26.29 per cent of total deaths.
- Dakshina Kannada has the second highest number of hospitals covered with 63 numbers and 7402 deaths.
- Less than five hundred deaths were occurred in the districts of Bangalore (Rural) and Koppal.

6.3 Deaths by major cause groups (*Table – 3*).

- For a consistently long period of time, four major cause groups have been on the top of the killer list. They are (1) “Diseases of the Circulatory system” (2) “Certain Infectious and parasitic diseases” (3) “Injury, poisoning and certain other Consequences of External Causes” and (4). “Certain Conditions Originating in the Perinatal Period”
- **“Diseases of the Circulatory system”** has been topping the list with 25.56 per cent deaths. It claimed 20753 deaths out of the total of 81186.

- **“Certain Infectious & parasitic diseases”** accounted for 10002 deaths (12.32 per cent).
- **“Injury, poisoning and certain other Consequences of External Causes”** caused 9433 deaths (11.62 per cent).
- **“Certain Conditions originating in the Perinatal Period”**, a group affecting only the new born or those who are less than one year old has claimed 8126 deaths (10.01 per cent). This reflects on the kind of nourishment, the child and the mother get in the prenatal period.
- The above four major causes were responsible for as many as 59.51 per cent of the total deaths.
- Other important groups in the descending order were; “Endocrine, nutritional & metabolic diseases” (6.39 per cent), “Diseases of the Digestive System” (6.29 per cent), “Diseases of the Respiratory System” (5.52 per cent), “Neoplasms” (5.36 per cent), “Symptoms, signs and Abnormal Clinical and laboratory findings not elsewhere classified” (5.26 per cent), “Diseases of the Nervous system” (3.48 per cent), “Diseases of the Genito-urinary system” (2.58 per cent), “Diseases of the blood & blood forming organs and certain disorders involving the immune mechanism” (1.96 per cent), “Pregnancy, Childbirth & puerperium” (1.08 per cent), “Congenital Malformations, Deformations & Chromosomal Abnormalities” (1.03 per cent), “Diseases of the Skin & Subcutaneous Tissue” (0.74 per cent), “Mental & Behavioural disorders” (0.58 per cent), “Diseases of the Musculo skeletal system & connective tissue” (0.20 per cent), “Diseases of the Eye and Adnexa” (0.01 per cent) and “Diseases of the Ear and Mastoid process (0.01 per cent)”.

6.4 Mortality by sex.

- There were 52406 deaths of males and 28780 of females.
- In almost all the major cause groups, deaths of males outnumbered those of females (except obviously in pregnancy complications).
- Due to “Diseases of the blood & blood forming organs and certain disorders involving the immune mechanism and Diseases of the Musculo skeletal system & connective tissue” deaths of females were more than of males.
- Sex wise difference was very distinct in the group “Mental & Behavioural Disorders” (396 deaths of males compared to 72 females).

- Deaths of males was more than two times that of females in major groups “Certain Infectious & parasitic diseases”, nearly two times in “Diseases of the Circulatory system” and “Diseases of Respiratory system”, more than one and half times in “Diseases of the Nervous System” and “Endocrine, Nutritional and Metabolic disease & more than three times in “Diseases of the Digestive System”.

6.5 Groupwise Leading causes of Deaths (Table – 8 and Table - 9).

The following gives a brief account of the 19 major cause groups according to their rank in descending order. The percentages under each group are shares within the groups. The first twelve took a toll of more than thousand deaths each in their account and the remaining eight accounted for less than thousand deaths each.

6.5.1 Diseases of the Circulatory System (Group-IX) Rank - 1

- The above was the top killer with a share of 25.56 per cent of the total deaths during 2003.
- Six causes of this group have been the major killers with 70.98 per cent of the deaths in the group. They are; “Acute Myocardial Infarction” (4957), “Cerebro vascular diseases” (4312), “All Other Hypertensive Diseases” (2753) & “All other Ischemic Heart diseases” (2709).
- “Other forms of Heart Diseases” (2628) and “Pulmonary Heart diseases and diseases of pulmonary circulation” (2053) were responsible for 13.05 per cent & 12.66 per cent respectively.
- People who were the worst affected were in the age group 70 and above, 55-64 and 45-54, ranking third in the group.

6.5.2 Certain Infectious & Parasitic Diseases (Group-I) Rank - 2

- 4156 deaths were with a share of 12.32 per cent due to “Respiratory Tuberculosis”, the top individual killer.
- The worst affected were the middle aged in the group 35-44 (810 deaths).
- Other important sub groups of this group, which are responsible for more than three hundred Deaths Viz. “Septicaemia” (1114), “Diarrhoea & Gastro enteritis of presumed Infectious Origin” (854), “Tuberculosis of Nervous System” (710), “Malaria” (452),” “Other Tetanus” (232) and under Viral diseases “Human immunodeficiency Virus(HIV) Diseases” (550), "Other Viral Hepatitis” (322) & “Other Viral Encephalitis”(310).

- It is pathetic that people in the early age groups 25-44 (368 deaths) became susceptible to fatality through HIV diseases. This is an area where awareness has to be created among the youngsters.
- The highest affected were in the age groups 35-44, 45-54 and 25-34, which together accounted for 4646 deaths (47.45 per cent).

6.5.3 Injury, Poisoning and Certain Other Consequences External Causes (Group XIX)

Rank - 3

- 11.62 per cent of the total deaths occurred in this group. Out of a total of 11 sub causes, three have taken 88.89 per cent of the deaths. In the descending order, they are; “Poisoning by Drugs & Biological Substances and Toxic effects of substances chiefly nonmedicinal as to source”, “Burns and Corrosions” & “Other injuries of specified, unspecified and multiple body regions”.
- Due to “Burns & Corrosions”, the number of deaths of females outnumbered those of males (more than double-1779 females vis-à-vis 672 males).
- The worst affected were in the age-groups 15-24, 25-34, 35-44 & 45-54. 74.04 per cent of the deaths were in these age groups. It is really pathetic that people in these groups became victims to fatality through entirely man-made or external causes.

6.5.4 Certain Conditions originating in the perinatal period: (Group XVI) Rank 4

- This, the fourth largest killer disease for the past ten years and has taken 8126 young lives, an increase of 1477 compared to the previous year.
- “Slow Fetal growth, Fetal malnutrition & Immaturity” was the top killer (39.17 per cent), followed by “Hypoxia, Birth asphyxia & other Respiratory Conditions” (33.42 per cent). The residual category of “All other Conditions originating in the perinatal period” took 26.10 per cent of the lives in the group.
- Of the total infant deaths, 98.69 per cent were attributed to this cause group. More male children died compared to females. It is a sad reflection of things that conditions were not conducive for the survival of the children and they are dieing before seeing the light of a day.
- Just four out of the 19 categorised groups have been found to be responsible for 59.51 per cent of the total deaths due to these causes.

6.5.5 “Endocrine, Nutritional & Metabolic Diseases & Immunity Disorders” (Group-IV)

Rank - 5

- “Diabetes Mellitus” was the most dominant cause accounting for 4402 deaths out of a total of 5188 (84.85 per cent).
- “All Other Endocrine and Metabolic Diseases” claimed 891 and “Other Protein Energy Malnutrition” claimed 260 Deaths. Most affected were in the age-group 35 onwards.

6.5.6 “Diseases of the Digestive System” (Group-XI) Rank - 6

- “Diseases of the Liver” was the top most killer with 2868 deaths. The next killer disease “All Other Diseases of the other parts of Digestive System” accounted for 660 deaths. “Peritonitis” with 587 deaths ranked third, “Disorders of the Appendix” and “Gastric and Duodenal Ulcer” took a toll of 339 and 246.
- More than 50 per cent of the victims belong to age-groups, 35-44, 45-54, & 55-64. To a significant extent, age groups 25-34 and 70 plus are also vulnerable.

6.5.7 “Diseases of the Respiratory System” (Group-X) Rank - 7

- Occupied the Seventh rank with 4478 deaths.
- Important Causes under this were; Lower Respiratory Diseases like “Asthma”, “Other Lower Respiratory Disorders” & “Bronchitis, Chronic & Unspecified Emphysema” with 1807 deaths and under “Other Diseases of the Respiratory System” like “All Other Diseases of the Respiratory System”, “Pneumonia” & “Pleurisy” a toll of 2620. These six caused 4427 Deaths (98.86 per cent). In this group male victims outnumbered females.
- The worst affected were in the age group 70 & above, followed by those 55-64 & 45-54.

6.5.8 “Neoplasms” (Group-II) Rank - 8

- “Neoplasms” in medical terminology refer to tumours, both malignant and non-malignant. There were 4353 deaths due to this and has taken the eighth rank.
- Of the different kinds of neoplasm, “Malignant Neoplasm of Trachea, Bronchus and Lung” with 441 deaths took the first place. This was followed by “Leukaemia” (402), “Malignant Neoplasm of Stomach” with 362 deaths, and “Malignant Neoplasm of Oesophagus” with 360, “Malignant Neoplasm” of other ill-defined, secondary,

unspecified and multiple sites with 335 & “Malignant Neoplasm of Breast” with 247. These together have been responsible for 49.32 per cent of the deaths in this group.

- People in the age group 55-64 were the prime targets followed by those in the age group 45-54 & 70 above. The three age groups (2662 deaths) put together accounted for 61.15 per cent of the deaths.

6.5.9 “Symptoms, Signs and Abnormal Clinical & Laboratory findings, not elsewhere Classified (XVIII) Rank - 9

- “All other symptoms, signs and Abnormal Clinical & Laboratory findings, Not elsewhere Classified” took a toll of 2811 (65.83 per cent) out of the total of 4270 deaths in the group. The next in the group was “Senility” (851).
- The worst affected were in the age group 70 & above and 55-64.
- Sexwise, male victims were larger in number.

6.5.10 “Diseases of the Nervous system” (Group-VI) Rank - 10

- Four important sub causes have occupied the prime place, viz., “All other diseases of the Nervous system” (1277), “Meningitis” (859), “Encephalitis” (392), and “Epilepsy” (263). Of the total 2828 deaths, 2791 deaths were due to these Four. The first alone was responsible for 45.16 per cent of the deaths. The Four put together took a toll of 98.69 per cent deaths in the group.
- The worst affected were in the age group of 70 plus. Those in the age group 45-54 were the next largest victims. Viewed from the angle of age, around 48 per cent were under 34.
- Sexwise, more number of males than females were the victims.

6.5.11. “Diseases of the Genito-urinary System” (Group-XIV) Rank - 11

- “Renal failure” was the highest killer in this group (1732), followed by “All other Diseases of Urinary System” (123). Both together accounted for 88.42 per cent.
- People in the age group 70 plus were the worst affected victims followed by those in the age groups 55-64 and 45-54.

6.5.12 “Diseases of the blood & blood forming organs and Certain Disorders involving the immune Mechanism” (Group III) Rank - 12

- In this group, female deaths exceeded that of males.

- “Other Anaemias” was the only major sub group with 1450 out of a total of 1591 deaths, forming 91.14 per cent.
- People in the age groups 15-34 and 45-54, were the most affected, followed by those in the age groups 55-64 & 35-44.

6.5.13 “Pregnancy, Childbirth and the Puerperium” (Group-XV) Rank - 13

- The number of deaths due to this cause was 875.
- “Other Complications of Pregnancy and Delivery” took the highest toll in this with 346, followed by “Indirect Obstetric Deaths” with 190 deaths. The other sub groups were “Oedema, Proteinuria and Hypertensive Disorders in Pregnancy, Childbirth and the Puerperium” and “Complications Pre-Dominantly Related to the Puerperium” with 165 & 120 deaths respectively.
- Females in the reproductive age groups of 15-24 and 25-34 were the worst affected. It is an area for urgent remedial measures.

6.5.14 Congenital Malformations, Deformations & Chromosomal Abnormalities” (Group-XVII) Rank - 14

- 840 deaths reported in this case. These deaths occur due to some malformation in the congenital stage.
- “Congenital malformations of the Circulatory System” (492) & “All other congenital malformations, deformations & chromosomal abnormalities, not elsewhere classified” (329) were the two important cause groups. These two together accounted for about 97.74 per cent.
- Children less than one year were the worst affected (608 out of a total of 840). Nearly 89.90 per cent were under four years of age.

6.5.15 “Diseases of the skin & Subcutaneous tissue” (Group-XII) Rank 15

- 601 deaths were due to this group. There are only two sub-groups of which the dominant one was “Infections of the Skin and Subcutaneous tissue”. It took a toll of 66.72 per cent of the deaths (401) and “All other Diseases of the Skin and Subcutaneous tissue” with 200 deaths (33.28 per cent).
- Age wise, groups 25-34 and onwards were the ones who suffered more.

6.5.16 “Mental and Behavioural Disorders” (Group-V) Rank - 16

- 468 deaths occurred due to this. Of these, “Mental and behavioural disorders due to Psychoactive substance use” was the single largest sub group with 361 deaths (77.14 per cent). In this group as a whole male - female ratio was disproportionate (396 as against 72).
- The worst affected were the people in the age group 45-54 (143 deaths), followed by 35-44 (106 deaths). These two together were responsible for about 53.21 per cent.

6.5.17 “Diseases of the musculoskeletal system & connective tissue” (Group-XIII) Rank -17

- 166 deaths were due to this. “Rheumatoid Arthritis and Other Inflammatory Polyarthropathies” with 81 deaths was the important sub-group followed by “All other diseases of the musculo skeletal system & connective tissue” with 75 deaths.
- The most vulnerable were in the age group 45-54 and 70 and above.

6.5.18 “Diseases of the Eye and Adnexa (Group VII) Rank - 18

- The total number of deaths due to this cause was 6, 4 males and 2 females.

6.5.19 “Diseases of the Ear and Mastoid Process” (Group VIII) Rank - 19

- The last among nineteen took a toll of 5 Deaths. All were females.

6.6 The principal individual causes (Table - 4)

Individual causes/cause groups which have taken a toll more than one thousand deaths have been christened the “Principal Individual Causes”.

- 23 of them together were responsible for 59140 deaths out of a total 81186 deaths (72.85 per cent).
- Of these twenty three, six relate to heart diseases, three each from (a) injury and poisoning, (b) Infant deaths & (c) Diseases of the Respiratory System.
- The cardiac related diseases in the descending order are; “Acute Myocardial Infarction, “Cerebrovascular Disease”, “All other Hypertensive Diseases”, “Other forms Ischaemic Heart diseases”, “All other Heart Diseases” and “Pulmonary Heart diseases and Diseases of pulmonary circulation”.

- Three causes under injury and poisoning are; “Poisoning by drugs and biological substances & Toxic effects of substances chiefly non medicinal as to source”, “Burns and Corrosions”, & “Other injuries of specified, unspecified and multiple body regions”.
- Main Causes killing the infants were; “Slow fetal growth, fetal malnutrition & immaturity”, “Hypoxia, birth asphyxia & other respiratory conditions” and “All other conditions originating in the perinatal period.
- Three causes under Diseases of the Respiratory System are “All Other diseases of the Respiratory System”, “Asthma” and “Pneumonia”.
- Except under “Burns & Corrosions” and “Other Anaemias”, under all other causes, deaths of males exceeded that of females.
- Deaths of males are more than two times of females in case of ‘Acute Myocardial Infarction’, “Respiratory tuberculosis”, “All other Ischaemic Heart Diseases” and “Renal failure”, and it was more than thrice in case of “Diseases of the Liver” and “Pulmonary Heart Diseases and Diseases of Pulmonary Circulation”. The difference was very wide in the case of “Other injuries of specified, unspecified and multiple body regions” (1793 males against 342 females).
- The sex wise distribution of deaths under principal individual causes was 65.80 per cent & 34.20 per cent for males and females respectively. In case of ‘Burns & Corrosions’, deaths of females were more than double of males.

6.7 Deaths by age and sex (Table-5)

- Among the males, those who had crossed 70 years ranked first followed strangely by those in the age group 45-54 and 54-64 with 48.21 per cent deaths of males. 35-44 occupied the fourth place. Infant deaths have taken the fifth position with 5819 deaths. Least vulnerable were those in the group 1-4.
- Among the females, 70 plus had the largest share. Second place was for those in the age group of 55-64, Infant deaths occupied the third place. Fourth place was occupied by the age group of 45-54, fifth and sixth by the prime age groups of 25-34 & 15-24. This may be due to Pregnancy Complications & Burns. The least affected was the age group 1-4.
- At the aggregate level, 70 plus age group was the first to be adversely hit, followed by the age group 55-64 and 45-54. As much as 12 per cent of the deaths were of infants, the most/least undesirable.

- The proportion of deaths in the age group 15-44, 28.07 per cent in the case of females as against 24 per cent of males.
- One fifth of the deaths among the males were in 45 years of age or more, the corresponding proportion for the fair sex was less at 49 per cent.

6.8 Leading causes of infant deaths (Table-6)

The death of a child which has not survived its first birthday is defined 'Infant death'. This, along with 'Under-five mortality', is reckoned as indirect indicators of socio-economic development.

- 9378 deaths were reported in this case.
- "Slow Fetal Growth, Fetal Malnutrition & Immaturity," has taken a toll of as much as 33.94 per cent followed by "Hypoxia, Birth Asphyxia & Other Respiratory Conditions" with 28.96 per cent deaths, "All other conditions originating in the perinatal period" was the third with 22.62 per cent. **"The three together have caused 85.52 per cent of the infant deaths"**. Least harmful among them was "Other Perinatal Jaundice" and "All other Diseases of the Nervous System" with 89 and 62 deaths to their account respectively.
- Fetal malnutrition was the most significant cause of infant deaths.

6.9 Leading causes of Maternal deaths (Table -7)

In the child bearing age or post natal condition certain morbid diseases will have fatal effect on women. A few causes lead to deaths in the pre and post natal conditions of women. These are classified as maternal deaths.

- Compared to the previous year their number has increased from 681 to 875. They constituted 3.04 per cent of the total deaths of females.
- The most important cause was "Other Complications of Pregnancy and Delivery" with 39.54 per cent (346 deaths), followed by "Indirect Obstetric Deaths" with 21.72 per cent (190 deaths). Deaths due to "Oedema, Proteinuria and Hypertensive disorders in pregnancy, child birth and the puerperium" was 18.86 per cent (165 deaths) and "Complications pre-dominantly related to the puerperium was 13.71 per cent (120 deaths).

6.10 Growth in the Medical Certification of cause of Death (Table – 10)

- Share of medically certified deaths in registered deaths has been fluctuating over the years. It was least with 11.6 per cent during 1997 and the highest with 22.6 per cent during 2003.

7. Conclusion:

1. The objective of the scheme of Medical Certification of Cause of Death is drawing the profile of Mortality pattern in the state. The scheme is in vogue in the State since 1967 and is aimed at drawing the profile by cause, age and sex on an annual basis. To start with, 44 hospitals were covered under the scheme and this was extended gradually to 901 hospitals, a remarkable scaling.
2. The enabling provision in the RBD Act 1969, read with the KRBD Rules 1999, has been largely responsible for such fair coverage in the state. This also would help in 100 per cent coverage of causes of death once the necessary infrastructure is established.
3. Year after year, “Diseases of the Circulatory System”, has been the most fatal cause group. The first four of the major cause groups were responsible for 3 in 5 or 59.51 per cent of the deaths. They are (1) Diseases of the Circulatory System, (2) Certain Infectious & Parasitic diseases, (3) Injury, Poisoning and certain other consequences of external causes and (4) Certain conditions originating in the perinatal period.
4. Among the individual causes, “Burns and Corrosions” took the highest toll of females and “Acute Myocardial Infarction” that of males.
5. Infant deaths have taken the fourth place among the deaths by age.
6. Agewise, the age group 70 plus had the highest share among males and females.
7. In all major causes, number of deaths of males exceeded that of females except in the case of “Diseases of blood & blood forming organs and certain disorders involving the immune mechanism”.
8. Leading cause of Infant deaths was ‘Slow fetal growth, fetal malnutrition and immaturity’ & of Maternal Deaths “Other Complications of Pregnancy & Delivery”.
9. Meaningful developmental programmes and remedial measures should concentrate on fetal malnutrition.
10. The same cause groups have topped the killer list for several years and so have been the individual causes, with slight variation in the ranks in different years.

* * * * *

TABLE - 1

DISTRIBUTION OF HOSPITALS COVERED BY CATEGORY & BED-STRENGTH

Sl.No	Bed-strength/ Hospital type	< 25	25-50	51-100	101- 200	201- 300	301- 400	401- 500	> 500	Not stated	Total	Percen - tage share
1	2	3	4	5	6	7	8	9	10	11	12	13
1	Accident	0	1	1	0	0	0	0	0	0	2	0.22
2	Cardiac	1	1	2	0	1	0	0	0	1	6	0.67
3	Epidemic	1	1	0	1	0	0	0	0	0	3	0.33
4	General	157	200	85	27	10	7	3	11	100	600	66.59
5	Leprosy	0	4	2	0	1	0	0	0	0	7	0.78
6	Maternity	160	11	4	2	3	1	0	1	2	184	20.42
7	Maternity & Paediatric	1	2	0	0	1	0	0	0	0	4	0.44
8	Neurology	1	0	0	0	0	1	0	1	0	3	0.33
9	Oncology	1	1	0	1	0	1	0	0	0	4	0.44
10	Ophthalmic	1	0	0	0	1	0	0	0	0	2	0.22
11	Paediatric	20	2	2	0	0	0	0	0	1	25	2.77
12	Specialised	20	0	0	0	0	0	0	0	1	21	2.33
13	Teaching	0	5	12	4	1	0	0	8	0	30	3.33
14	Tuberculosis	0	0	4	1	3	0	2	0	0	10	1.11
	Total	363	228	112	36	21	10	5	21	105	901	100.0

TABLE - 2
DISTRICTWISE AND SEXWISE DISTRIBUTION OF DEATHS

Sl. No	District	No. of Hospitals	Male	Female	Total	Percentage share
1	Bagalkote	28	484	323	807	0.99
2	Bangalore Urban	356	13480	7860	21340	26.29
3	Bangalore Rural	9	262	115	377	0.46
4	Belgaum	35	3064	1558	4622	5.69
5	Bellary	26	2506	1682	4188	5.16
6	Bidar	9	605	341	946	1.17
7	Bijapur	20	1126	586	1712	2.11
8	Chamarajanagara	12	310	201	511	0.63
9	Chikmagalur	15	772	461	1233	1.52
10	Chitradurga	12	682	414	1096	1.35
11	D.Kannada	63	4912	2490	7402	9.12
12	Davanagere	20	2706	1612	4318	5.32
13	Dharwad	50	3561	1838	5399	6.65
14	Gadag	25	676	390	1066	1.31
15	Gulbarga	15	1218	749	1967	2.42
16	Hassan	6	465	262	727	0.90
17	Haveri	9	388	222	610	0.75
18	Kodagu	9	628	309	937	1.15
19	Kolar	17	2313	1182	3495	4.30
20	Koppal	6	111	35	146	0.18
21	Mandya	11	890	374	1264	1.56
22	Mysore	29	5261	2682	7943	9.78
23	Raichur	8	573	391	964	1.19
24	Shimoga	21	1474	790	2264	2.79
25	Tumkur	19	1064	508	1572	1.94
26	Udupi	38	1948	966	2914	3.59
27	Uttara Kannada	33	700	362	1062	1.31
	State Total	901	52179	28703	80882	99.63
	Other States	-	227	77	304	0.37
	Grand Total	901	52406	28780	81186	100.00

TABLE - 3
DEATHS BY MAJOR CAUSE GROUPS

Sl. No	Group	Major Cause of Death With Code	Male	Female	Total	Percen - tage share	Rank
1	I	CERTAIN INFECTIOUS AND PARASITIC DISEASES (A00-B99)	6801	3201	10002	12.32	II
2	II	NEOPLASMS (C00-D48)	2575	1778	4353	5.36	VIII
3	III	DISEASES OF THE BLOOD & BLOOD FORMING ORGANS AND CERTAIN DISORDERS INVOLVING THE IMMUNE MECHANISM (D50-D89)	760	831	1591	1.96	XII
4	IV	ENDOCRINE, NUTRITIONAL AND METABOLIC DISEASES (E00-E89)	3241	1947	5188	6.39	V
5	V	MENTAL AND BEHAVIOURAL DISORDERS (F01-F99)	396	72	468	0.58	XVI
6	VI	DISEASES OF THE NERVOUS SYSTEM (G00-G98)	1767	1061	2828	3.48	X
7	VII	DISEASES OF THE EYE AND ADNEXA (H00-H59)	4	2	6	0.01	XVIII
8	VII	DISEASES OF THE EAR AND MASTOID PROCESS (H60-H95)	0	5	5	0.01	XIX
9	IX	DISEASES OF THE CIRCULATORY SYSTEM (I00-I99)	13790	6963	20753	25.56	I
10	X	DISEASES OF THE RESPIRATORY SYSTEM (J00-J98)	2981	1497	4478	5.52	VII
11	XI	DISEASES OF THE DIGESTIVE SYSTEM (K00-K92)	3972	1133	5105	6.29	VI
12	XII	DISEASES OF THE SKIN AND SUBCUTANEOUS TISSUE (L00-L98)	403	198	601	0.74	XV
13	XII	DISEASES OF THE MUSCULOSKELETAL SYSTEM AND CONNECTIVE TISSUE (M00-M99)	79	87	166	0.20	XVII
14	XIV	DISEASES OF THE GENITOURINARY SYSTEM (N00-N99)	1392	706	2098	2.58	XI
15	XV	PREGNANCY, CHILDBIRTH AND THE PUERPERIUM (O00-O99)	0	875	875	1.08	XIII
16	XVI	CERTAIN CONDITIONS ORIGINATING IN THE PERINATAL PERIOD(P00-P96)	5043	3083	8126	10.01	IV
17	XVII	CONGENITAL MALFORMATIONS,DEFORMATIONS & CHROMOSOMAL ABNORMALITIES (Q00-Q99)	519	321	840	1.03	XIV
18	XVIII	SYMPTOMS,SIGNS AND ABNORMAL CLINICAL & LABORATORY FINDINGS,NOT ELSEWHERE CLASSIFIED (R000-R99)	2711	1559	4270	5.26	IX
19	XIX	INJURY,POISONING AND CERTAIN OTHER CONSEQUENCES OF EXTERNAL CAUSES (S00-T98)	5972	3461	9433	11.62	III
		Total	52406	28780	81186	100.00	

DEATHS BY MAJOR CAUSE GROUPS-2002

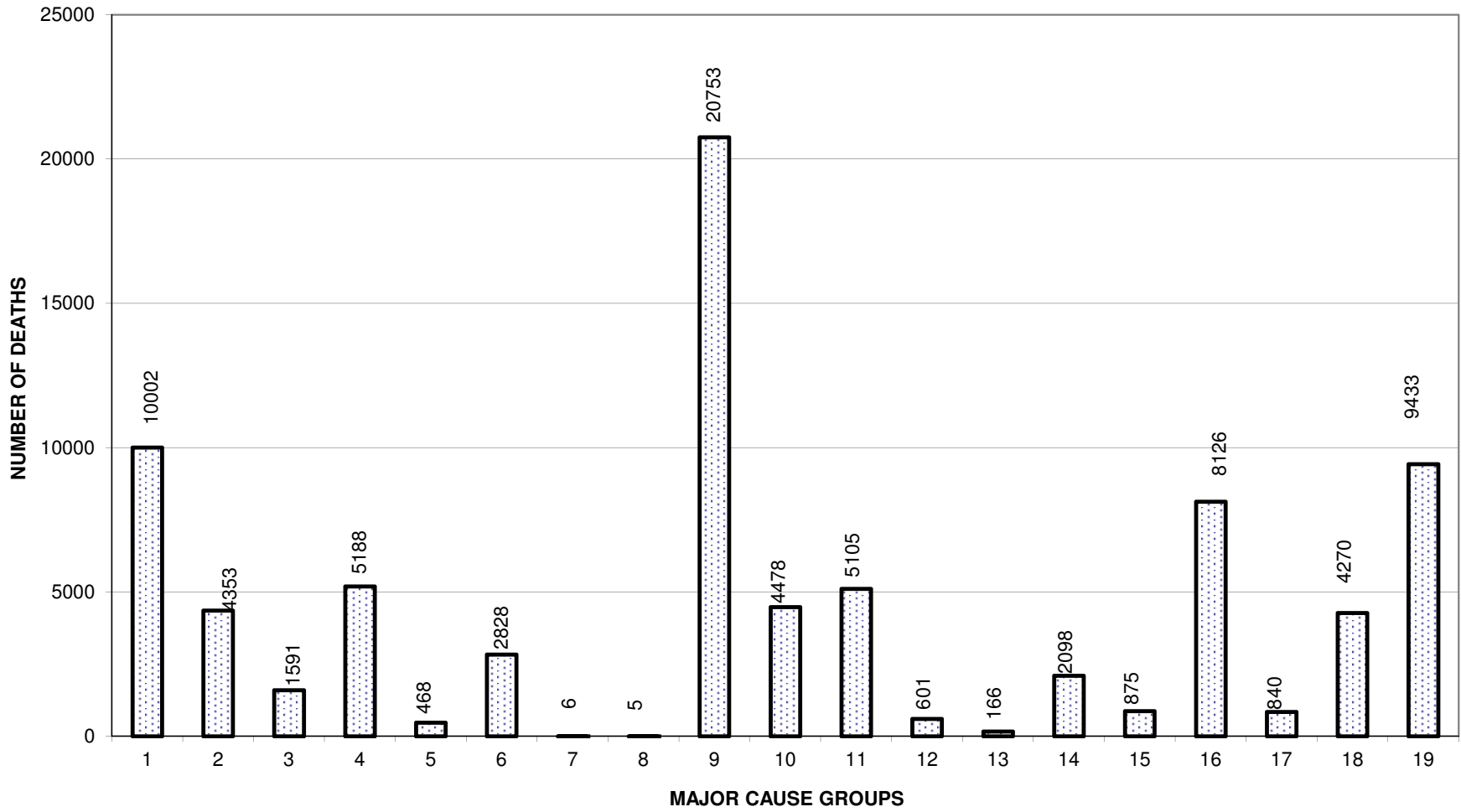


TABLE - 4
THE PRINCIPAL INDIVIDUAL CAUSES

Sl. No	Name of the Disease with Code	Male	Female	Total	Percentage share
1	ACUTE MYOCARDIAL INFARCTION (I21-I22)	3504	1453	4957	6.11
2	DIABETES MELLITUS (E10-E14)	2768	1634	4402	5.42
3	CEREBROVASCULAR DISEASES (I60-I69)	2852	1460	4312	5.31
4	RESPIRATORY TUBERCULOSIS (A15-A16)	3109	1047	4156	5.12
5	POISONINGS BY DRUGS AND BIOLOGICAL SUBSTANCES,AND TOXIC EFFECTS OF SUBSTANCES CHIEFLY NON MEDICINAL AS TO SOURCE (T 36 – T50 & T51 – T65)	2689	1110	3799	4.68
6	SLOW FETAL GROWTH,FETAL MALNUTRITION AND IMMATURITY (P05-P07)	1919	1264	3183	3.92
7	DISEASES OF THE LIVER (K70-K76)	2299	569	2868	3.53
8	ALL OTHER SYMPTOMS,SIGNS AND ABNORMAL CLINICAL & LABORATORY FINDINGS,NOT ELSEWHERE CLASSIFIED	1875	936	2811	3.46
9	ALL OTHER HYPERTENSIVE DISEASES (I10,I12-I15)	1644	1109	2753	3.39
10	HYPOXIA,BIRTH ASPHYXIA AND OTHER RESPIRATORY CONDITIONS (P20-P28)	1707	1009	2716	3.35
11	ALL OTHER ISCHAEMIC HEART DISEASES (I20& I23-I25)	1902	807	2709	3.34
12	OTHER FORMS OF HEART DISEASES (I30-I51)	1631	997	2628	3.24
13	BURNS AND CORROSIONS (T20-T32)	672	1779	2451	3.02
14	OTHER INJURIES OF SPECIFIED,UNSPECIFIED AND MULTIPLE BODY REGIONS (S00-S01,S05,S09-S11)	1793	342	2135	2.63
15	ALL OTHER CONDITIONS ORIGINATING IN THE PERINATAL PERIOD (P00-P04,P08,P29-P54)	1353	768	2121	2.61
16	PULMONARY HEART DISEASES AND DISEASES OF PULMONARY CIRCULATION (I26-I28)	1545	508	2053	2.53
17	RENAL FAILURE (N17-N19)	1171	561	1732	2.13
18	OTHER ANAEMIAS (D50-D55,D57-D64)	672	778	1450	1.79
19	ALL OTHER DISEASES OF THE NERVOUS SYSTEM (G10-G25,G31,G35-G37,G43-G98)	815	462	1277	1.57
20	ALL OTHER DISEASES OF THE RESPIRATORY SYSTEM (J60-J86,J92-J98)	830	430	1260	1.55
21	ASTHMA (J45-J46)	751	400	1151	1.42
22	SEPTICAEMIA (A40-A41)	692	422	1114	1.37
23	PNEUMONIA (J12-J18)	722	380	1102	1.36
	TOTAL	38915	20225	59140	72.85
	TOTAL NO. OF DEATHS IN STATE	52406	28780	81186	100.00

TABLE - 5

DISTRIBUTION OF DEATHS BY AGE AND SEX

Sl. No.	Age Group (In Years)	Male			Female			Total		
		No.	Percentage share	Rank	No.	Percentage share	Rank	No.	Percentage share	Rank
1	2	3	4	5	6	7	8	9	10	11
1	Below 1 year	5819	11.10	V	3559	12.37	III	9378	11.55	IV
2	1-4	857	1.64	XI	749	2.60	XI	1606	1.98	XI
3	5-14	983	1.88	X	811	2.82	X	1794	2.21	X
4	15-24	2552	4.87	IX	2785	9.68	VI	5337	6.57	VIII
5	25-34	4074	7.77	VI	2827	9.82	V	6901	8.50	VI
6	35-44	5911	11.28	IV	2466	8.57	VII	8377	10.32	V
7	45-54	8352	15.94	II	3182	11.06	IV	11534	14.21	III
8	55-64	8086	15.43	III	3584	12.45	II	11670	14.37	II
9	65-69	3886	7.42	VII	1991	6.92	VIII	5877	7.24	VII
10	70 & above	8824	16.84	I	5460	18.97	I	14284	17.59	I
11	Age Not Stated	3062	5.84	VIII	1366	4.75	IX	4428	5.45	IX
	Total	52406	100.0		28780	100.0		81186	100.0	

SEX AND AGEWISE DISTRIBUTION OF DEATHS - 2003

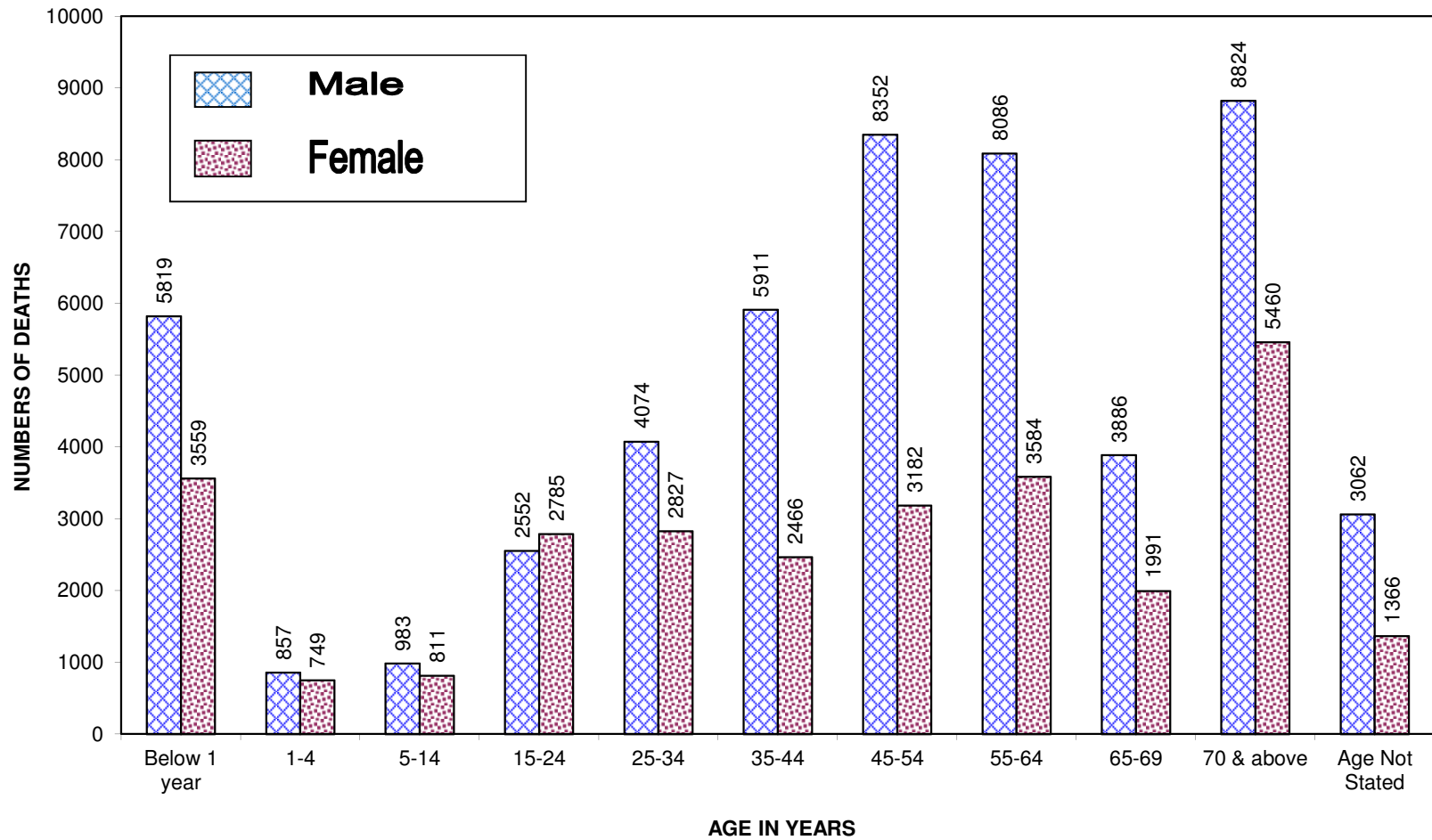


TABLE – 6

LEADING CAUSES OF INFANT DEATHS

Sl.No.	Major Cause of Death With Code	Male	Female	Total	Percentage share
1	SLOW FETAL GROWTH,FETAL MALNUTRITION AND IMMATURITY (P05-P07)	1919	1264	3183	33.94
2	HYPOXIA,BIRTH ASPHYXIA AND OTHER RESPIRATORY CONDITIONS(P20-P28)	1707	1009	2716	28.96
3	ALL OTHER CONDITIONS ORIGINATING IN THE PERINATAL PERIOD(P00-P04,P08,P29-P54,	1353	768	2121	22.62
4	CONGENITAL MALFORMATIONS OF THE CIRCULATORY SYSTEM(Q20-Q28)	221	134	355	3.78
5	ALL OTHER CONGENITAL MALFORMATIONS,DEFORMATIONS & CHROMOSOMAL ABNORMALITIES, NOT ELSEWHERE CLASSIFIED (Q00-Q04, Q06-Q07, Q10-Q18, Q30-Q34, Q38-Q99)	152	85	237	2.53
6	MENINGITIS(G00 & G03)	120	75	195	2.08
7	DIARRHOEA AND GASTROENTERITIS OF PRESUMED INFECTIOUS ORIGIN(A09)	73	58	131	1.40
8	OTHER PERINATAL JAUNDICE(P58-P59)	56	33	89	0.95
9	ALL OTHER DISEASES OF THE NERVOUS SYSTEM(G10-G25,G31,G35-G37,G43-G98)	40	22	62	0.66
	All Other Causes of Infant Deaths	178	111	289	3.08
	Total Deaths	5819	3559	9378	100.00

LEADING CAUSES OF INFANT DEATHS -2003

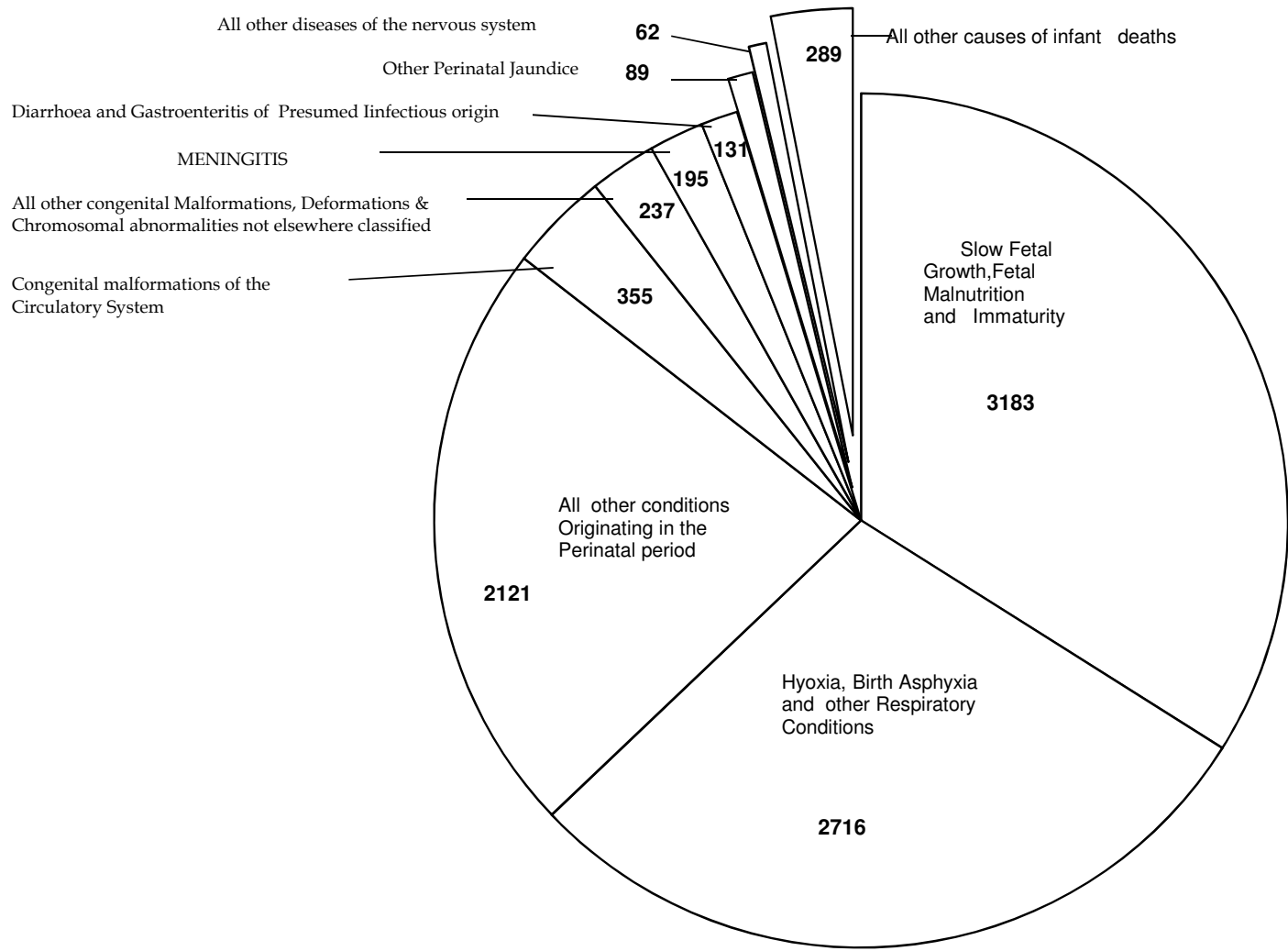


TABLE - 7

LEADING CAUSES OF MATERNAL DEATHS

Sl. No	Major Cause of Death with code	No. of Deaths	Percentage share
1	OTHER COMPLICATIONS OF PREGNANCY AND DELIVERY(O20-022,O24-O63,O67-O75, O80-O84)	346	39.54
2	INDIRECT OBSTETRIC DEATHS(O98-O99)	190	21.72
3	OEDEMA,PROTEINURIA AND HYPERTENSIVE DISORDERS IN PREGNANCY,CHILD BIRTH AND THE PUERPERIUM	165	18.86
4	COMPLICATIONS PRE-DOMINANTLY RELATED TO THE PUERPERIUM(O85-O92)	120	13.71
5	OTHER PREGNANCIES WITH ABORTIVE OUTCOME(O00-O02 & O05-O08)	49	5.60
6	Others	5	0.57
7	Total Maternal deaths	875	100.00
	All Other Female Deaths	27905	
	Total Female deaths	28780	

**TABLE -8: MEDICALLY CERTIFIED DEATHS BY AGE AND SEX ACCORDING TO NATIONAL LIST OF TENTH REVISION OF ICD DURING THE YEAR - 2003.
STATE: KARNATAKA**

MG/ C AT/S C	CAUSE OF DEATH	SEX	AGE GROUPS											N.S	TOTAL
			<1	1-4	5-14	15-24	25-34	35-44	45-54	55-64	65-69	70+			
1	2	3	4	5	6	7	8	9	10	11	12	13	14	15	
I	CERTAIN INFECTIOUS AND PARASITIC DISEASES(A00-B99)	Male	144	265	278	492	936	1263	1184	849	342	635	413	6801	
		Female	103	235	221	412	522	441	400	317	134	260	156	3201	
		Total	247	500	499	904	1458	1704	1584	1166	476	895	569	10002	
1	INTESTINAL INFECTIOUS DISEASES(A00-A09)	Male	76	39	23	31	28	82	97	72	22	78	29	577	
		Female	62	41	24	20	53	47	45	46	29	66	21	454	
		Total	138	80	47	51	81	129	142	118	51	144	50	1031	
1	CHOLERA(A00)	Male	0	0	0	0	0	0	0	0	0	0	0	0	
		Female	0	0	0	0	2	2	0	0	0	0	1	5	
2	TYPHOID FEVER AND PARATYPHOID FEVERS(A01)	Male	0	2	3	8	0	7	6	0	0	2	0	28	
		Female	0	0	6	5	10	9	6	3	0	1	1	41	
3	FOOD POISONING(A02,A05)	Male	0	0	0	2	0	0	4	0	0	0	0	6	
		Female	0	0	2	0	0	0	0	0	0	0	0	2	
4	SHIGELLOSIS(A03)	Male	0	6	6	0	0	0	0	2	2	0	0	16	
		Female	0	0	0	0	0	0	0	0	0	0	0	0	
5	AMOEBIASIS(A06)	Male	1	0	1	2	5	8	7	6	5	8	0	43	
		Female	2	0	3	3	2	3	1	2	0	2	0	18	
6	DIARRHOEA AND GASTROENTERITIS OF PRESUMED INFECTIOUS ORIGIN(A09)	Male	73	27	13	17	23	67	80	64	15	68	29	476	
		Female	58	39	13	10	35	33	38	41	29	63	19	378	
7	OTHER INTESTINAL INFECTIOUS DISEASES(A04,A07-A08)	Male	2	4	0	2	0	0	0	0	0	0	0	8	
		Female	2	2	0	2	4	0	0	0	0	0	0	10	

**TABLE -8: MEDICALLY CERTIFIED DEATHS BY AGE AND SEX ACCORDING TO NATIONAL LIST OF TENTH REVISION OF ICD DURING THE YEAR - 2003.
STATE: KARNATAKA**

MG/ C AT/S C	CAUSE OF DEATH	SEX	AGE GROUPS											N.S.	TOTAL
			<1	1-4	5-14	15-24	25-34	35-44	45-54	55-64	65-69	70+			
1	2	3	4	5	6	7	8	9	10	11	12	13	14	15	
2	TUBERCULOSIS(A15-A19)	Male	15	80	82	265	551	765	729	542	226	339	227	3821	
		Female	14	54	59	215	284	213	210	166	67	81	69	1432	
		Total	29	134	141	480	835	978	939	708	293	420	296	5253	
1	RESPIRATORY TUBERCULOSIS(A15-A16)	Male	8	23	29	182	449	634	629	487	200	301	167	3109	
		Female	6	18	29	159	196	176	169	117	46	72	59	1047	
2	TUBERCULOSIS OF NERVOUS SYSTEM(A17)	Male	6	49	35	62	73	93	74	28	15	13	33	481	
		Female	6	31	22	42	38	25	18	30	6	6	5	229	
3	TUBERCULOSIS OF OTHER ORGANS AND MILIARY TUBERCULOSIS(A18-A19)	Male	1	8	18	21	29	38	26	27	11	25	27	231	
		Female	2	5	8	14	50	12	23	19	15	3	5	156	
3	OTHER BACTERIAL DISEASES(A20-A49)	Male	18	43	64	66	81	145	169	128	64	160	56	994	
		Female	3	50	47	65	61	70	66	76	24	79	22	563	
		Total	21	93	111	131	142	215	235	204	88	239	78	1557	
1	PLAGUE(A20)	NO DEATHS													
2	LEPROSY(A30)	Male	0	0	0	2	0	2	0	0	0	2	2	8	
		Female	0	0	0	0	0	0	0	0	0	1	0	1	
3	NEONATAL TETANUS(A33)	Male	4	0	0	0	0	0	0	0	0	0	0	4	
		Female	2	0	0	0	0	0	0	0	0	0	0	2	
4	OTHER TETANUS(A34-A35)	Male	0	9	33	7	11	16	32	20	5	8	8	149	
		Female	0	16	24	3	4	5	3	14	2	12	0	83	
5	DIPHTHERIA(A36)	Male	2	0	0	0	0	0	0	0	0	0	1	3	
		Female	0	3	0	0	0	0	0	0	0	0	0	3	

**TABLE -8: MEDICALLY CERTIFIED DEATHS BY AGE AND SEX ACCORDING TO NATIONAL LIST OF TENTH REVISION OF ICD DURING THE YEAR - 2003.
STATE: KARNATAKA**

MG/ C AT/S C	CAUSE OF DEATH	SEX	AGE GROUPS											TOTAL
			<1	1-4	5-14	15-24	25-34	35-44	45-54	55-64	65-69	70+	N.S	
1	2	3	4	5	6	7	8	9	10	11	12	13	14	15
6	WHOOPING COUGH(A37)	Male	2	0	0	0	0	0	0	0	0	0	0	2
		Female	0	0	0	0	0	0	0	0	0	0	0	0
7	MENINGOCOCCAL INFECTION(A39)	Male	10	4	6	3	2	4	5	0	0	2	0	36
		Female	1	0	2	7	1	2	2	0	0	4	0	19
8	SEPTICEMIA(A40-A41)	Male	0	26	23	45	51	101	110	98	54	146	38	692
		Female	0	30	21	47	47	61	53	57	22	62	22	422
9	ALL OTHER TYPES OF BACTERIAL DISEASES(A21-A28, A31-A32,A38,A42-A49)	Male	0	4	2	9	17	22	22	10	5	2	7	100
		Female	0	1	0	8	9	2	8	5	0	0	0	33
4	INFECTIONS WITH A PREDOMINANTLY SEXUAL MODE OF TRANSMISSION(A50-A64)	Male	0	0	0	0	3	0	0	2	0	0	1	6
		Female	0	0	0	0	2	0	0	0	0	0	0	2
		Total	0	0	0	0	5	0	0	2	0	0	1	8
1	SYPHILIS(A50-A53)	Male	0	0	0	0	3	0	0	0	0	0	0	3
		Female	0	0	0	0	0	0	0	0	0	0	0	0
2	OTHER TYPES OF INFECTIONS WITH A PREDOMINANTLY SEXUAL MODE OF TRANSMISSION(A54-A64)	Male	0	0	0	0	0	0	0	2	0	0	1	3
		Female	0	0	0	0	2	0	0	0	0	0	0	2
5	VIRAL DISEASES(A70-A74 & A80-B34)	Male	35	85	90	92	216	218	125	68	25	30	74	1058
		Female	24	78	71	80	98	79	54	16	11	19	28	558
		Total	59	163	161	172	314	297	179	84	36	49	102	1616
1	ACUTE POLIOMYELITIS(A80)	Male	0	0	0	0	0	0	0	0	0	0	0	0
		Female	0	0	0	0	0	0	0	0	0	0	0	0
2	RABIES(A82)	Male	0	6	20	14	10	16	13	6	1	8	7	101
		Female	0	2	8	3	5	4	6	0	2	0	2	32

**TABLE -8: MEDICALLY CERTIFIED DEATHS BY AGE AND SEX ACCORDING TO NATIONAL LIST OF TENTH REVISION OF ICD DURING THE YEAR - 2003.
STATE: KARNATAKA**

MG/ C AT/S C	CAUSE OF DEATH	SEX	AGE GROUPS											TOTAL	
			<1	1-4	5-14	15-24	25-34	35-44	45-54	55-64	65-69	70+	N.S		
1	2	3	4	5	6	7	8	9	10	11	12	13	14	15	
3	JAPANESE ENCEPHALITIS(A83.0)	Male	0	0	1	1	1	0	0	0	0	0	0	0	3
		Female	0	0	0	1	0	0	0	0	0	0	0	0	1
4	OTHER VIRAL ENCEPHALITIS(A83.1-A83.9,A84-A86)	Male	16	48	31	16	12	15	10	5	2	0	9	164	
		Female	15	39	40	14	12	4	7	0	2	5	8	146	
5	DENGUE FEVER(A90)	Male	0	1	0	2	0	2	0	0	0	0	0	5	
		Female	0	1	1	0	0	0	2	1	0	2	1	8	
6	OTHER ARTHOPOD-BORNE VIRAL FEVERS AND VIRAL HAEMORRHAGIC FEVERS (A91-A94, A96-A99)	Male	8	13	18	15	7	9	7	3	0	7	2	89	
		Female	3	13	9	6	6	5	7	5	3	4	0	61	
7	SMALLPOX(B03)	Male	0	0	0	0	0	0	0	0	0	0	0	0	
		Female	0	0	0	0	0	0	0	0	0	0	0	0	
8	MEASLES(B05)	Male	2	5	2	0	0	0	0	0	0	0	2	11	
		Female	2	10	2	0	0	0	0	0	0	0	1	15	
9	ACUTE HEPATITIS(B16)	Male	0	0	0	0	2	3	4	2	1	0	0	12	
		Female	0	0	0	2	1	2	0	0	0	1	0	6	
10	OTHER VIRAL HEPATITIS(B15, B17-B19)	Male	0	5	13	25	36	32	26	26	15	9	18	205	
		Female	0	7	7	36	14	21	12	6	2	7	5	117	
11	HUMAN IMMUNODEFICIENCY VIRUS[HIV]DISEASE (B20-B24)	Male	0	0	0	18	136	139	56	22	4	4	33	412	
		Female	0	0	0	14	53	40	20	0	0	0	11	138	
12	ALL OTHER TYPES OF VIRAL DISEASES(A70-A74,A81,A87-A89, A95,B00-B02,B04,B06-B09 & B25-B34)	Male	9	7	5	1	12	2	9	4	2	2	3	56	
		Female	4	6	4	4	7	3	0	4	2	0	0	34	

**TABLE -8: MEDICALLY CERTIFIED DEATHS BY AGE AND SEX ACCORDING TO NATIONAL LIST OF TENTH REVISION OF ICD DURING THE YEAR - 2003.
STATE: KARNATAKA**

MG/ C AT/S C	CAUSE OF DEATH	SEX	AGE GROUPS											TOTAL
			<1	1-4	5-14	15-24	25-34	35-44	45-54	55-64	65-69	70+	N.S	
1	2	3	4	5	6	7	8	9	10	11	12	13	14	15
6	PROTOZOAL DISEASES(B50-B64)	Male	0	18	19	36	46	46	56	28	4	21	24	298
		Female	0	12	18	27	22	27	20	10	3	11	14	164
		Total	0	30	37	63	68	73	76	38	7	32	38	462
1	MALARIA(B50-B54)	Male	0	18	19	36	44	43	56	26	4	21	24	291
		Female	0	12	18	27	20	26	20	10	3	11	14	161
2	ALL OTHER TYPES OF PROTOZOAL DISEASES(B55-B64)	Male	0	0	0	0	2	3	0	2	0	0	0	7
		Female	0	0	0	0	2	1	0	0	0	0	0	3
7	OTHER CERTAIN INFECTIOUS AND PARASITIC DISEASES & LATE EFFECTS OF INFECTIOUS & PARASITIC DISEASES (A65-A69 & A75-A79,B35-B49,B65-B94 & B99)	Male	0	0	0	2	11	7	8	9	1	7	2	47
		Female	0	0	2	5	2	5	5	3	0	4	2	28
		Total	0	0	2	7	13	12	13	12	1	11	4	75
1	FILARIASIS(B74)	Male	0	0	0	0	0	2	2	0	1	0	0	5
		Female	0	0	0	0	0	0	2	2	0	0	0	4
2	OTHER HELMINTHIASIS(B65-B73,B75,B77-B83)	Male	0	0	0	0	2	0	1	0	0	0	0	3
		Female	0	0	2	0	0	0	2	0	0	2	0	6
3	OTHER SPIROCHAETAL DISEASES AND RICKETTSIOSES (A65-A69 & A75-A79)	Male	0	0	0	0	0	0	0	0	0	2	0	2
		Female	0	0	0	0	0	0	0	0	0	0	0	0
4	ALL OTHER INFECTIOUS AND PARASITIC DISEASES & LATE EFFECTS OF INFECTIOUS AND PARASITIC DISEASES (B35-B49,B65,B76,B85-B94 & B99)	Male	0	0	0	2	9	5	5	9	0	5	2	37
		Female	0	0	0	5	2	5	1	1	0	2	2	18
II	NEOPLASMS (C00-D48)	Male	4	32	40	92	108	223	502	573	304	527	170	2575
		Female	8	13	33	57	100	251	412	349	156	299	100	1778
		Total	12	45	73	149	208	474	914	922	460	826	270	4353
8	MALIGNANT NEOPLASMS OF LIP, ORAL CAVITY AND PHARYNX (C00-C14)	Male	0	0	0	0	4	23	47	47	17	32	18	188
		Female	0	0	0	3	2	6	11	23	4	21	2	72
		Total	0	0	0	3	6	29	58	70	21	53	20	260

**TABLE -8: MEDICALLY CERTIFIED DEATHS BY AGE AND SEX ACCORDING TO NATIONAL LIST OF TENTH REVISION OF ICD DURING THE YEAR - 2003.
STATE: KARNATAKA**

MG/ C AT/S C	CAUSE OF DEATH	SEX	AGE GROUPS											N.S	TOTAL
			<1	1-4	5-14	15-24	25-34	35-44	45-54	55-64	65-69	70+			
1	2	3	4	5	6	7	8	9	10	11	12	13	14	15	
1	MALIGNANT NEOPLASMS OF LIP, ORAL CAVITY AND PHARYNX (C00-C14)	Male	0	0	0	0	4	23	47	47	17	32	18	188	
		Female	0	0	0	3	2	6	11	23	4	21	2	72	
9	MALIGNANT NEOPLASMS OF DIGESTIVE ORGANS (C15-C26)	Male	0	0	0	3	32	73	196	216	119	234	63	936	
		Female	0	0	0	6	23	48	88	98	44	99	27	433	
		Total	0	0	0	9	55	121	284	314	163	333	90	1369	
1	MALIGNANT NEOPLASM OF OESOPHAGUS (C15)	Male	0	0	0	1	4	20	52	59	36	55	13	240	
		Female	0	0	0	2	5	15	18	25	18	28	9	120	
2	MALIGNANT NEOPLASM OF STOMACH (C16)	Male	0	0	0	0	6	16	56	49	35	65	20	247	
		Female	0	0	0	0	3	8	37	29	15	19	4	115	
3	MALIGNANT NEOPLASMS OF SMALL INTESTINE INCLUDING DUODENUM (C17)	Male	0	0	0	0	2	0	3	1	0	4	0	10	
		Female	0	0	0	0	0	0	2	0	0	0	0	2	
4	MALIGNANT NEOPLASM OF COLON (C18)	Male	0	0	0	1	7	10	7	36	5	22	10	98	
		Female	0	0	0	2	3	7	8	10	2	16	6	54	
5	MALIGNANT NEOPLASMS OF RECTOSIGMOID JUNCTION, RECTUM,ANUS AND ANAL CANAL (C19-C21)	Male	0	0	0	0	7	9	14	16	3	14	4	67	
		Female	0	0	0	0	4	6	5	14	0	10	5	44	
6	MALIGNANT NEOPLASMS OF LIVER AND INTRAHEPATIC BILE DUCTS (C22)	Male	0	0	0	1	6	13	42	31	22	46	5	166	
		Female	0	0	0	2	2	10	12	13	7	19	1	66	
7	MALIGNANT NEOPLASM OF PANCREAS (C25)	Male	0	0	0	0	0	1	12	17	13	19	5	67	
		Female	0	0	0	0	6	0	5	2	2	2	2	19	
8	OTHER MALIGNANT NEOPLASM OF DIGESTIVE ORGANS (C23-C24,C26)	Male	0	0	0	0	0	4	10	7	5	9	6	41	
		Female	0	0	0	0	0	2	1	5	0	5	0	13	

**TABLE -8: MEDICALLY CERTIFIED DEATHS BY AGE AND SEX ACCORDING TO NATIONAL LIST OF TENTH REVISION OF ICD DURING THE YEAR - 2003.
STATE: KARNATAKA**

MG/ C AT/S C	CAUSE OF DEATH	SEX	AGE GROUPS											TOTAL
			<1	1-4	5-14	15-24	25-34	35-44	45-54	55-64	65-69	70+	N.S	
1	2	3	4	5	6	7	8	9	10	11	12	13	14	15
10	MALIGNANT NEOPLASMS OF RESPIRATORY & INTRATHORACIC ORGANS (C30-C39)	Male	0	0	0	0	13	24	110	124	67	89	34	461
		Female	0	0	0	2	11	12	34	21	16	31	8	135
		Total	0	0	0	2	24	36	144	145	83	120	42	596
1	MALIGNANT NEOPLASM OF LARYNX (C32)	Male	0	0	0	0	3	9	20	24	14	15	6	91
		Female	0	0	0	0	2	0	1	1	3	3	0	10
2	MALIGNANT NEOPLASMS OF TRACHEA, BRONCHUS AND LUNG (C33-C34)	Male	0	0	0	0	7	15	89	98	53	72	27	361
		Female	0	0	0	1	4	5	22	16	7	18	7	80
3	OTHER MALIGNANT NEOPLASMS OF RESPIRATORY AND INTRATHORACIC ORGANS (C30-C31,C37-C39)	Male	0	0	0	0	3	0	1	2	0	2	1	9
		Female	0	0	0	1	5	7	11	4	6	10	1	45
11	MALIGNANT NEOPLASMS OF BONE,MESOTHELIAL AND SOFT TISSUE,SKIN AND BREAST(C40-C50)	Male	0	4	1	9	1	9	13	10	6	5	0	58
		Female	0	0	0	8	9	62	85	48	21	40	13	286
		Total	0	4	1	17	10	71	98	58	27	45	13	344
1	MALIGNANT NEOPLASMS OF BONE AND ARTICULAR CARTILAGE (C40-C41)	Male	0	4	1	8	1	4	7	8	2	2	0	37
		Female	0	0	0	7	0	2	5	4	2	3	1	24
2	MALIGNANT MELANOMA OF SKIN (C43)	Male	0	0	0	0	0	0	0	0	0	0	0	0
		Female	0	0	0	0	0	0	0	0	0	1	0	1
3	OTHER MALIGNANT NEOPLASM OF SKIN (C44)	Male	0	0	0	0	0	2	0	0	0	0	0	2
		Female	0	0	0	0	0	1	0	0	0	1	0	2
4	MALIGNANT NEOPLASMS OF MESOTHELIAL AND SOFT TISSUE (C45-C49)	Male	0	0	0	1	0	3	6	2	4	3	0	19
		Female	0	0	0	1	1	4	2	0	1	3	0	12
5	MALIGNANT NEOPLASM OF BREAST (C50)	Female	0	0	0	0	8	55	78	44	18	32	12	247

**TABLE -8: MEDICALLY CERTIFIED DEATHS BY AGE AND SEX ACCORDING TO NATIONAL LIST OF TENTH REVISION OF ICD DURING THE YEAR - 2003.
STATE: KARNATAKA**

MG/ C AT/S C	CAUSE OF DEATH	SEX	AGE GROUPS											TOTAL
			<1	1-4	5-14	15-24	25-34	35-44	45-54	55-64	65-69	70+	N.S	
1	2	3	4	5	6	7	8	9	10	11	12	13	14	15
12	MALIGNANT NEOPLASMS OF GENITOURINARY ORGANS (C51-C68)	Male	0	0	0	0	3	13	19	53	24	66	6	184
		Female	0	0	0	0	14	54	83	83	33	52	17	336
		Total	0	0	0	0	17	67	102	136	57	118	23	520
1	MALIGNANT NEOPLASM OF CERVIX UTERI (C53)	Female	0	0	0	0	9	29	53	45	18	26	16	196
2	MALIGNANT NEOPLASMS OF OTHER AND UNSPECIFIED PARTS OF UTERUS (C54-C55)	Female	0	0	0	0	0	2	1	16	3	7	0	29
3	MALIGNANT NEOPLASM OF OVARY (C56)	Female	0	0	0	0	3	15	24	18	10	9	1	80
4	MALIGNANT NEOPLASMS OF PLACENTA (C58)	Female	0	0	0	0	0	0	0	0	0	0	0	0
5	OTHER MALIGNANT NEOPLASM OF FEMALE GENITAL ORGANS (C51-C52,C57)	Female	0	0	0	0	1	0	2	2	0	1	0	6
6	MALIGNANT NEOPLASM OF PROSTATE (C61)	Male	0	0	0	0	0	0	1	15	11	40	6	73
7	OTHER MALIGNANT NEOPLASM OF MALE GENITAL ORGANS (C60-C62,C63)	Male	0	0	0	0	0	9	6	2	2	2	0	21
8	MALIGNANT NEOPLASM OF BLADDER (C67)	Male	0	0	0	0	0	4	8	23	9	19	0	63
		Female	0	0	0	0	0	0	2	2	0	6	0	10
9	OTHER MALIGNANT NEOPLASM OF URINARY TRACT (C64-C66,C68)	Male	0	0	0	0	3	0	4	13	2	5	0	27
		Female	0	0	0	0	1	8	1	0	2	3	0	15
13	MALIGNANT NEOPLASMS OF EYE,BRAIN AND OTHER PARTS OF CENTRAL NERVOUS SYSTEM (C69-C72)	Male	0	3	6	1	16	20	22	13	10	17	10	118
		Female	0	4	9	6	6	17	28	13	11	18	8	120
		Total	0	7	15	7	22	37	50	26	21	35	18	238
1	MALIGNANT NEOPLASMS OF EYE & ADNEXA (C69)	Male	0	0	0	0	0	0	0	1	0	0	0	1
		Female	0	0	0	0	0	0	0	0	0	0	0	0

**TABLE -8: MEDICALLY CERTIFIED DEATHS BY AGE AND SEX ACCORDING TO NATIONAL LIST OF TENTH REVISION OF ICD DURING THE YEAR - 2003.
STATE: KARNATAKA**

MG/ C AT/S C	CAUSE OF DEATH	SEX	AGE GROUPS											N.S	TOTAL
			<1	1-4	5-14	15-24	25-34	35-44	45-54	55-64	65-69	70+			
1	2	3	4	5	6	7	8	9	10	11	12	13	14	15	
2	MALIGNANT NEOPLASMS OF MENINGES,BRAIN AND OTHER PARTS OF CENTRAL NERVOUS SYSTEM(C70-C72)	Male	0	3	6	1	16	20	22	12	10	17	10	117	
		Female	0	4	9	6	6	17	28	13	11	18	8	120	
14	MALIGNANT NEOPLASMS OF OTHER AND UNSPECIFIED SITES(C73-C80 & C97)	Male	0	0	0	10	5	17	32	41	22	40	19	186	
		Female	0	0	0	5	12	21	33	27	12	22	17	149	
		Total	0	0	0	15	17	38	65	68	34	62	36	335	
1	MALIGNANT NEOPLASMS OF OTHER ILL-DEFINED, SECONDARY, UNSPECIFIED AND MULTIPLE SITES(C73-C80 & C97)	Male	0	0	0	10	5	17	32	41	22	40	19	186	
		Female	0	0	0	5	12	21	33	27	12	22	17	149	
15	MALIGNANT NEOPLASMS OF LYMPHOID, HAEMATOPOIETIC AND RELATED TISSUE (C81-C96)	Male	4	23	33	68	31	42	62	68	35	43	20	429	
		Female	8	9	23	24	23	27	43	33	15	12	8	225	
		Total	12	32	56	92	54	69	105	101	50	55	28	654	
1	HODGKIN'S DISEASE(C81)	Male	0	0	1	0	0	5	0	5	7	0	0	18	
		Female	0	0	0	0	0	0	4	0	0	0	0	4	
2	NON-HODGKIN'S LYMPHOMA(C82-C85)	Male	0	2	8	17	9	11	24	24	20	20	9	144	
		Female	0	2	4	2	5	5	12	4	8	4	2	48	
3	MULTIPLE MYELOMA AND MALIGNANT PLASMA CELL NEOPLASMS(C90)	Male	0	0	0	0	0	0	4	3	2	5	0	14	
		Female	0	0	0	0	0	4	4	6	2	2	0	18	
4	LEUKAEMIA(C91-C95)	Male	3	21	24	50	21	25	34	36	6	18	10	248	
		Female	8	7	18	22	18	18	23	23	5	6	6	154	
5	OTHER MALIGNANT NEOPLASMS OF LYMPHOID, HAEMATOPOIETIC AND RELATED TISSUE(C88 & C96)	Male	1	0	0	1	1	1	0	0	0	0	1	5	
		Female	0	0	1	0	0	0	0	0	0	0	0	1	
16	CARCINOMA IN SITU(D00-D09)	Male	0	0	0	0	0	0	1	0	2	0	0	3	
		Female	0	0	0	0	0	1	0	0	0	0	0	1	
		Total	0	0	0	0	0	1	1	0	2	0	0	4	

TABLE -8: MEDICALLY CERTIFIED DEATHS BY AGE AND SEX ACCORDING TO NATIONAL LIST OF TENTH REVISION OF ICD DURING THE YEAR - 2003.
STATE: KARNATAKA

MG/ C AT/S C	CAUSE OF DEATH	SEX	AGE GROUPS											TOTAL
			<1	1-4	5-14	15-24	25-34	35-44	45-54	55-64	65-69	70+	N.S	
1	2	3	4	5	6	7	8	9	10	11	12	13	14	15
1	CARCINOMA IN SITU(D00-D09)	Male	0	0	0	0	0	0	1	0	2	0	0	3
		Female	0	0	0	0	0	1	0	0	0	0	0	1
17	BENIGN NEOPLASMS(D10-D36)	Male	0	0	0	0	0	2	0	1	1	0	0	4
		Female	0	0	0	1	0	2	4	0	0	0	0	7
		Total	0	0	0	1	0	4	4	1	1	0	0	11
1	LEIOMYOMA OF UTERUS(D25)	Male	0	0	0	0	0	0	0	0	0	0	0	0
		Female	0	0	0	0	0	2	2	0	0	0	0	4
2	ALL OTHER BENIGN NEOPLASMS(D10-D24,D26-D36)	Male	0	0	0	0	0	2	0	1	1	0	0	4
		Female	0	0	0	1	0	0	2	0	0	0	0	3
18	OTHER AND UNSPECIFIED NEOPLASM(D37-D48)	Male	0	2	0	1	3	0	0	0	1	1	0	8
		Female	0	0	1	2	0	1	3	3	0	4	0	14
		Total	0	2	1	3	3	1	3	3	1	5	0	22
1	OTHER AND UNSPECIFIED NEOPLASM(D37-D48)	Male	0	2	0	1	3	0	0	0	1	1	0	8
		Female	0	0	1	2	0	1	3	3	0	4	0	14
III	DISEASES OF THE BLOOD & BLOOD FORMING ORGANS AND CERTAIN DISORDERS INVOLVING THE IMMUNE MECHANISM (D50-D89)	Male	1	41	24	91	72	89	139	115	60	82	46	760
		Female	0	36	34	164	143	103	85	95	51	83	37	831
		Total	1	77	58	255	215	192	224	210	111	165	83	1591
19	DISEASES OF THE BLOOD & BLOOD FORMING ORGANS AND CERTAIN DISORDERS INVOLVING IMMUNE MECHANISM(D50-D89)	Male	1	41	24	91	72	89	139	115	60	82	46	760
		Female	0	36	34	164	143	103	85	95	51	83	37	831
		Total	1	77	58	255	215	192	224	210	111	165	83	1591
1	THALASSAEMIA(D56)	Male	1	2	0	2	0	0	0	2	0	0	0	7
		Female	0	0	0	0	0	0	0	0	0	0	0	0

**TABLE -8: MEDICALLY CERTIFIED DEATHS BY AGE AND SEX ACCORDING TO NATIONAL LIST OF TENTH REVISION OF ICD DURING THE YEAR - 2003.
STATE: KARNATAKA**

MG/ C AT/S C	CAUSE OF DEATH	SEX	AGE GROUPS											TOTAL
			<1	1-4	5-14	15-24	25-34	35-44	45-54	55-64	65-69	70+	N.S	
1	2	3	4	5	6	7	8	9	10	11	12	13	14	15
2	OTHER ANAEMIAS(D50-D55,D57-D64)	Male	0	36	19	80	56	79	132	101	53	74	42	672
		Female	0	32	31	154	128	98	82	92	46	82	33	778
3	ALL OTHER DISEASES OF BLOOD & BLOOD FORMING ORGANS (D65-D77)	Male	0	3	5	8	14	9	7	11	6	7	4	74
		Female	0	4	3	9	15	5	3	3	5	1	4	52
4	CERTAIN DISORDERS INVOLVING THE IMMUNE MECHANISM(D80-D89)	Male	0	0	0	1	2	1	0	1	1	1	0	7
		Female	0	0	0	1	0	0	0	0	0	0	0	1
IV	ENDOCRINE, NUTRITIONAL AND METABOLIC DISEASES(E00-E89)	Male	8	63	21	66	82	243	567	796	336	839	220	3241
		Female	2	56	36	40	47	106	276	437	259	586	102	1947
		Total	10	119	57	106	129	349	843	1233	595	1425	322	5188
20	MALNUTRITION(E40-E46)	Male	7	56	9	7	6	14	11	0	3	15	12	140
		Female	2	34	14	4	3	6	2	2	2	2	14	87
		Total	9	90	23	11	9	20	13	2	5	29	16	227
1	KWASHIORKOR(E40)	Male	2	6	2	3	2	4	4	0	2	6	6	37
		Female	0	4	0	0	2	2	1	0	2	1	2	14
2	NUTRITIONAL MARASMUS(E41)	Male	5	7	0	0	0	2	1	0	1	3	2	21
		Female	2	9	1	2	1	0	1	0	0	4	0	20
3	OTHER PROTEIN-ENERGY MALNUTRITION(E42-E46)	Male	0	43	7	4	4	8	6	0	0	6	4	82
		Female	0	21	13	2	0	4	0	2	0	9	2	53
21	ENDOCRINE, OTHER NUTRITIONAL AND METABOLIC DISEASES (E00-E34 & E50-E89)	Male	1	7	12	59	76	229	556	796	333	824	208	3101
		Female	0	22	22	36	44	100	274	435	257	572	98	1860
		Total	1	29	34	95	120	329	830	1231	590	1396	306	4961
1	DISORDERS OF THYROID GLAND(E00-E07)	Male	0	0	0	0	0	0	7	8	1	1	3	20
		Female	0	0	0	0	3	10	7	14	9	13	1	57

**TABLE -8: MEDICALLY CERTIFIED DEATHS BY AGE AND SEX ACCORDING TO NATIONAL LIST OF TENTH REVISION OF ICD DURING THE YEAR - 2003.
STATE: KARNATAKA**

MG/ C AT/S C	CAUSE OF DEATH	SEX	AGE GROUPS											N.S	TOTAL
			<1	1-4	5-14	15-24	25-34	35-44	45-54	55-64	65-69	70+			
1	2	3	4	5	6	7	8	9	10	11	12	13	14	15	
2	DIABETES MELLITUS(E10-E14)	Male	0	4	8	40	59	176	483	731	315	778	174	2768	
		Female	0	3	17	23	32	75	241	405	232	527	79	1634	
3	ALL OTHER NUTRITIONAL DEFICIENCIES(E50-E64)	Male	0	0	0	0	0	6	8	0	0	1	0	15	
		Female	0	0	0	0	0	0	3	2	0	0	0	5	
4	ALL OTHER ENDOCRINE AND METABOLIC DISEASES (E15-E34 & E65-E89)	Male	1	3	4	19	17	47	58	57	17	44	31	298	
		Female	0	19	5	13	9	15	23	14	16	32	18	164	
V	MENTAL AND BEHAVIOURAL DISORDERS(F01-F99)	Male	0	0	0	14	56	89	127	59	9	22	20	396	
		Female	0	0	0	9	3	17	16	12	2	9	4	72	
		Total	0	0	0	23	59	106	143	71	11	31	24	468	
22	MENTAL AND BEHAVIOURAL DISORDERS(F01-F99)	Male	0	0	0	14	56	89	127	59	9	22	20	396	
		Female	0	0	0	9	3	17	16	12	2	9	4	72	
		Total	0	0	0	23	59	106	143	71	11	31	24	468	
1	MENTAL AND BEHAVIOURAL DISORDERS DUE TO PSYCHOACTIVE SUBSTANCE USE (F10-F19)	Male	0	0	0	6	51	86	108	50	7	11	18	337	
		Female	0	0	0	1	2	7	11	0	1	0	2	24	
2	SCHIZOPHRENIA, SCHIZOTYPAL & DELUSIONAL DISORDERS (F20-F29)	Male	0	0	0	0	2	2	7	2	0	2	2	17	
		Female	0	0	0	4	0	2	4	7	0	7	0	24	
3	ALL OTHER MENTAL BEHAVIOURAL DISORDERS (F01-F09,F30-F99)	Male	0	0	0	8	3	1	12	7	2	9	0	42	
		Female	0	0	0	4	1	8	1	5	1	2	2	24	
VI	DISEASES OF THE NERVOUS SYSTEM(G00-G98)	Male	185	135	128	147	178	179	214	168	77	244	112	1767	
		Female	107	148	103	119	119	96	92	62	47	120	48	1061	
		Total	292	283	231	266	297	275	306	230	124	364	160	2828	

**TABLE -8: MEDICALLY CERTIFIED DEATHS BY AGE AND SEX ACCORDING TO NATIONAL LIST OF TENTH REVISION OF ICD DURING THE YEAR - 2003.
STATE: KARNATAKA**

MG/ C AT/S C	CAUSE OF DEATH	SEX	AGE GROUPS											N.S	TOTAL
			<1	1-4	5-14	15-24	25-34	35-44	45-54	55-64	65-69	70+			
1	2	3	4	5	6	7	8	9	10	11	12	13	14	15	
23	INFLAMMATORY DISEASES OF THE CENTRAL NERVOUS SYTEM(G00-G09)	Male	145	89	70	87	104	78	84	55	10	39	34	795	
		Female	85	91	54	56	71	41	36	14	6	10	17	481	
		Total	230	180	124	143	175	119	120	69	16	49	51	1276	
1	MENINGITIS(G00 & G03)	Male	120	63	43	59	69	53	50	39	5	26	19	546	
		Female	75	64	29	29	40	25	25	10	2	5	9	313	
2	ENCEPHALITIS,MYELITIS AND ENCEPHALOMYELITIS(G04)	Male	23	26	25	28	33	19	34	14	5	13	12	232	
		Female	10	27	25	24	29	16	9	4	4	4	8	160	
3	OTHER INFLAMMATORY DISEASES OF THE CENTRAL NERVOUS SYSTEM(G06,G08-G09)	Male	2	0	2	0	2	6	0	2	0	0	3	17	
		Female	0	0	0	3	2	0	2	0	0	1	0	8	
24	OTHER DISEASES OF THE NERVOUS SYSTEM(G10-G98)	Male	40	46	58	60	74	101	130	113	67	205	78	972	
		Female	22	57	49	63	48	55	56	48	41	110	31	580	
		Total	62	103	107	123	122	156	186	161	108	315	109	1552	
1	ALZHEIMER'S DISEASE(G30)	Male	0	0	0	0	0	0	0	0	0	7	1	8	
		Female	0	0	0	0	0	0	0	0	3	0	1	4	
2	EPILEPSY(G40-G41)	Male	0	18	20	15	13	24	19	10	4	11	15	149	
		Female	0	20	8	33	18	5	10	6	3	9	2	114	
3	ALL OTHER DISEASES OF THE NERVOUS SYSTEM (G10-G25,G31,G35-G37,G43-G98)	Male	40	28	38	45	61	77	111	103	63	187	62	815	
		Female	22	37	41	30	30	50	46	42	35	101	28	462	
VII	DISEASES OF THE EYE AND ADNEXA(H00-H59)	Male	0	0	0	0	0	0	1	3	0	0	0	4	
		Female	0	0	0	0	0	0	2	0	0	0	0	2	
		Total	0	0	0	0	0	0	0	3	3	0	0	0	6

**TABLE -8: MEDICALLY CERTIFIED DEATHS BY AGE AND SEX ACCORDING TO NATIONAL LIST OF TENTH REVISION OF ICD DURING THE YEAR - 2003.
STATE: KARNATAKA**

MG/ C AT/S C	CAUSE OF DEATH	SEX	AGE GROUPS											N.S	TOTAL
			<1	1-4	5-14	15-24	25-34	35-44	45-54	55-64	65-69	70+			
1	2	3	4	5	6	7	8	9	10	11	12	13	14	15	
25	DISEASES OF THE EYE AND ADNEXA(H00-H59)	Male	0	0	0	0	0	0	1	3	0	0	0	4	
		Female	0	0	0	0	0	0	2	0	0	0	0	2	
		Total	0	0	0	0	0	0	3	3	0	0	0	6	
1	DISEASES OF THE EYE AND ADNEXA(H00-H59)	Male	0	0	0	0	0	0	1	3	0	0	0	4	
		Female	0	0	0	0	0	0	2	0	0	0	0	2	
VIII	I DISEASES OF THE EAR AND MASTOID PROCESS(H60-H95)	Male	0	0	0	0	0	0	0	0	0	0	0	0	
		Female	0	0	0	2	0	3	0	0	0	0	0	5	
		Total	0	0	0	2	0	3	0	0	0	0	0	5	
26	DISEASES OF THE EAR AND MASTOID PROCESS(H60-H95)	Male	0	0	0	0	0	0	0	0	0	0	0	0	
		Female	0	0	0	2	0	3	0	0	0	0	0	5	
		Total	0	0	0	2	0	3	0	0	0	0	0	5	
1	DISEASES OF THE EAR AND MASTOID PROCESS(H60-H95)	Male	0	0	0	0	0	0	0	0	0	0	0	0	
		Female	0	0	0	2	0	3	0	0	0	0	0	5	
IX	DISEASES OF THE CIRCULATORY SYSTEM(I00-I99)	Male	10	14	39	64	488	1131	2571	3131	1591	3767	984	13790	
		Female	2	6	28	56	266	454	954	1427	860	2512	398	6963	
		Total	12	20	67	120	754	1585	3525	4558	2451	6279	1382	20753	
27	ACUTE RHEUMATIC FEVER AND CHRONIC RHEUMATIC HEART DISEASES(I00-I09)	Male	10	14	39	64	60	45	50	43	5	18	28	376	
		Female	2	6	28	56	83	70	70	21	11	15	37	399	
		Total	12	20	67	120	143	115	120	64	16	33	65	775	
1	ACUTE RHEUMATIC FEVER(I00-I02)	Male	4	4	2	1	0	0	0	2	0	0	0	13	
		Female	0	0	5	4	2	0	0	0	0	1	0	12	
2	CHRONIC RHEUMATIC HEART DISEASES(I05-I09)	Male	6	10	37	63	60	45	50	41	5	18	28	363	
		Female	2	6	23	52	81	70	70	21	11	14	37	387	

**TABLE -8: MEDICALLY CERTIFIED DEATHS BY AGE AND SEX ACCORDING TO NATIONAL LIST OF TENTH REVISION OF ICD DURING THE YEAR - 2003.
STATE: KARNATAKA**

MG/ C AT/S C	CAUSE OF DEATH	SEX	AGE GROUPS											N.S	TOTAL
			<1	1-4	5-14	15-24	25-34	35-44	45-54	55-64	65-69	70+			
1	2	3	4	5	6	7	8	9	10	11	12	13	14	15	
28	HYPERTENSIVE DISEASES(I10-I115)	Male	0	0	0	0	28	100	298	385	208	515	116	1650	
		Female	0	0	0	0	12	38	136	240	176	464	46	1112	
		Total	0	0	0	0	40	138	434	625	384	979	162	2762	
1	HYPERTENSIVE HEART DISEASES(I11)	Male	0	0	0	0	0	0	1	2	1	2	0	6	
		Female	0	0	0	0	0	0	1	0	0	2	0	3	
2	ALL OTHER HYPERTENSIVE DISEASES(I10,I12-I15)	Male	0	0	0	0	28	100	297	383	207	513	116	1644	
		Female	0	0	0	0	12	38	135	240	176	462	46	1109	
29	ISCHAEMIC HEART DISEASES(I20-I25)	Male	0	0	0	0	139	437	1021	1274	637	1490	408	5406	
		Female	0	0	0	0	15	104	284	520	286	908	143	2260	
		Total	0	0	0	0	154	541	1305	1794	923	2398	551	7666	
1	ACUTE MYOCARDIAL INFARCTION(I21-I22)	Male	0	0	0	0	119	350	727	795	382	854	277	3504	
		Female	0	0	0	0	10	73	206	343	187	547	87	1453	
2	ALL OTHER ISCHAEMIC HEART DISEASES(I20& I23-I25)	Male	0	0	0	0	20	87	294	479	255	636	131	1902	
		Female	0	0	0	0	5	31	78	177	99	361	56	807	
30	DISEASES OF PULMONARY CIRCULATION AND OTHER FORMS OF HEART DISEASE(I26-I51)	Male	0	0	0	0	130	239	519	716	386	950	236	3176	
		Female	0	0	0	0	60	122	213	292	190	540	88	1505	
		Total	0	0	0	0	190	361	732	1008	576	1490	324	4681	
1	PULMONARY HEART DISEASES AND DISEASES OF PULMONARY CIRCULATION(I26-I28)	Male	0	0	0	0	17	72	229	397	221	493	116	1545	
		Female	0	0	0	0	14	47	66	91	70	196	24	508	
2	OTHER FORMS OF HEART DISEASES(I30-I51)	Male	0	0	0	0	113	167	290	319	165	457	120	1631	
		Female	0	0	0	0	46	75	147	201	120	344	64	997	

**TABLE -8: MEDICALLY CERTIFIED DEATHS BY AGE AND SEX ACCORDING TO NATIONAL LIST OF TENTH REVISION OF ICD DURING THE YEAR - 2003.
STATE: KARNATAKA**

MG/ C AT/S C	CAUSE OF DEATH	SEX	AGE GROUPS											N.S	TOTAL
			<1	1-4	5-14	15-24	25-34	35-44	45-54	55-64	65-69	70+			
1	2	3	4	5	6	7	8	9	10	11	12	13	14	15	
31	CEREBROVASCULAR DISEASES(I60-I69)	Male	0	0	0	0	106	253	617	646	333	720	177	2852	
		Female	0	0	0	0	61	98	212	304	176	539	70	1460	
		Total	0	0	0	0	167	351	829	950	509	1259	247	4312	
1	CEREBROVASCULAR DISEASES(I60-I69)	Male	0	0	0	0	106	253	617	646	333	720	177	2852	
		Female	0	0	0	0	61	98	212	304	176	539	70	1460	
32	OTHER DISEASES OF THE CIRCULATORY SYSTEM(I70-I99)	Male	0	0	0	0	25	57	66	67	22	74	19	330	
		Female	0	0	0	0	35	22	39	50	21	46	14	227	
		Total	0	0	0	0	60	79	105	117	43	120	33	557	
1	ATHEROSCLEROSIS(I70)	Male	0	0	0	0	4	6	5	11	4	10	3	43	
		Female	0	0	0	0	2	0	0	1	4	9	0	16	
2	ARTERIAL EMBOLISM AND THROMBOSIS(I74)	Male	0	0	0	0	3	5	6	4	0	5	0	23	
		Female	0	0	0	0	1	0	3	1	0	4	0	9	
3	OTHER DISEASES OF ARTERIES, ARTERIOLES & CAPILLARIES(I71-I73 & I77-I78)	Male	0	0	0	0	7	17	23	23	4	21	9	104	
		Female	0	0	0	0	2	9	17	17	2	14	1	62	
4	PHLEBITIS,THROMBOPHLEBITIS,VENOUS EMBOLISM AND THROMBOSIS(I80-I82)	Male	0	0	0	0	5	18	19	16	2	26	4	90	
		Female	0	0	0	0	30	11	10	18	7	9	11	96	
5	ALL OTHER DISEASES OF THE CIRCULATORY SYSTEM(I83-I99)	Male	0	0	0	0	6	11	13	13	12	12	3	70	
		Female	0	0	0	0	0	2	9	13	8	10	2	44	
X	DISEASES OF THE RESPIRATORY SYSTEM(J00-J98)	Male	22	87	73	103	187	288	431	499	360	740	191	2981	
		Female	17	92	74	84	104	115	217	211	134	372	77	1497	
		Total	39	179	147	187	291	403	648	710	494	1112	268	4478	

**TABLE -8: MEDICALLY CERTIFIED DEATHS BY AGE AND SEX ACCORDING TO NATIONAL LIST OF TENTH REVISION OF ICD DURING THE YEAR - 2003.
STATE: KARNATAKA**

MG/ C AT/S C	CAUSE OF DEATH	SEX	AGE GROUPS											TOTAL
			<1	1-4	5-14	15-24	25-34	35-44	45-54	55-64	65-69	70+	N.S	
1	2	3	4	5	6	7	8	9	10	11	12	13	14	15
33	DISEASES OF THE UPPER RESPIRATORY TRACT (J00-J06 & J30-J39)	Male	4	5	0	0	2	0	2	4	0	0	0	17
		Female	2	3	0	0	0	0	2	2	5	3	0	17
		Total	6	8	0	0	2	0	4	6	5	3	0	34
1	ACUTE PHARYNGITIS AND ACUTE TONSILLITIS(J02-J03)	Male	0	1	0	0	0	0	0	3	0	0	0	4
		Female	0	1	0	0	0	0	0	0	0	1	0	2
2	ACUTE LARYNGITIS AND TRACHEITIS(J04)	Male	4	2	0	0	2	0	0	0	0	0	0	8
		Female	2	0	0	0	0	0	0	2	0	0	0	4
3	OTHER ACUTE UPPER RESPIRATORY INFECTIONS (J00-J01 & J05-J06)	Male	0	0	0	0	0	0	0	0	0	0	0	0
		Female	0	0	0	0	0	0	0	0	2	0	0	2
4	ALL OTHER DISEASES OF UPPER RESPIRATORY TRACT(J30-J39)	Male	0	2	0	0	0	0	2	1	0	0	0	5
		Female	0	2	0	0	0	0	2	0	3	2	0	9
34	LOWER RESPIRATORY DISEASES(J20-J22 & J40-J47)	Male	14	12	6	16	25	66	139	254	188	434	83	1237
		Female	11	6	4	3	24	49	75	102	86	198	29	587
		Total	25	18	10	19	49	115	214	356	274	632	112	1824
1	ACUTE BRONCHITIS AND ACUTE BRONCHIOLITIS(J20-J21)	Male	9	1	0	0	0	0	0	1	0	0	2	13
		Female	2	0	2	0	0	0	0	0	0	0	0	4
2	BRONCHITIS, CHRONIC AND UNSPECIFIED EMPHYSEMA(J40-J43)	Male	0	0	0	4	4	13	22	42	37	77	19	218
		Female	0	0	0	0	3	6	21	12	8	22	9	81
3	ASTHMA(J45-J46)	Male	0	0	0	2	17	36	88	171	127	264	46	751
		Female	0	0	0	3	14	37	46	78	61	146	15	400
4	OTHER LOWER RESPIRATORY DISORDERS(J22,J44 & J47)	Male	5	11	6	10	4	17	29	40	24	93	16	255
		Female	9	6	2	0	7	6	8	12	17	30	5	102

**TABLE -8: MEDICALLY CERTIFIED DEATHS BY AGE AND SEX ACCORDING TO NATIONAL LIST OF TENTH REVISION OF ICD DURING THE YEAR - 2003.
STATE: KARNATAKA**

MG/ C AT/S C	CAUSE OF DEATH	SEX	AGE GROUPS											N.S	TOTAL
			<1	1-4	5-14	15-24	25-34	35-44	45-54	55-64	65-69	70+			
1	2	3	4	5	6	7	8	9	10	11	12	13	14	15	
35	OTHER DISEASES OF THE RESPIRATORY SYSTEM (J10-J18,J60-J98)	Male	4	70	67	87	160	222	290	241	172	306	108	1727	
		Female	4	83	70	81	80	66	140	107	43	171	48	893	
		Total	8	153	137	168	240	288	430	348	215	477	156	2620	
1	INFLUENZA(J10-J11)	Male	0	0	0	0	0	0	0	0	0	0	0	0	
		Female	0	0	0	0	0	0	0	0	0	0	0	0	
2	PNEUMONIA(J12-J18)	Male	0	51	29	44	50	86	130	94	75	122	41	722	
		Female	0	66	43	27	24	24	54	45	15	69	13	380	
3	PLEURISY(J90)	Male	0	2	3	10	24	30	31	24	17	23	11	175	
		Female	0	2	0	5	8	4	13	17	7	17	10	83	
4	ALL OTHER DISEASES OF THE RESPIRATORY SYSTEM (J60-J86,J92-J98)	Male	4	17	35	33	86	106	129	123	80	161	56	830	
		Female	4	15	27	49	48	38	73	45	21	85	25	430	
XI	DISEASES OF THE DIGESTIVE SYSTEM(K00-K92)	Male	0	15	36	155	361	834	1031	706	233	373	228	3972	
		Female	0	38	37	92	134	165	211	187	74	134	61	1133	
		Total	0	53	73	247	495	999	1242	893	307	507	289	5105	
36	DISEASES OF ORAL CAVITY, SALIVARY GLANDS AND JAWS(K00-K14)	Male	0	0	0	0	2	0	6	4	0	0	2	14	
		Female	0	0	4	0	0	0	1	0	1	1	0	7	
		Total	0	0	4	0	2	0	7	4	1	1	2	21	
1	DISEASES OF ORAL CAVITY, SALIVARY GLANDS AND JAWS(K00-K14)	Male	0	0	0	0	2	0	6	4	0	0	2	14	
		Female	0	0	4	0	0	0	1	0	1	1	0	7	
37	DISEASES OF THE OTHER PARTS OF DIGESTIVE SYSTEM(K20-K92)	Male	0	15	36	155	359	834	1025	702	233	373	226	3958	
		Female	0	38	33	92	134	165	210	187	73	133	61	1126	
		Total	0	53	69	247	493	999	1235	889	306	506	287	5084	

**TABLE -8: MEDICALLY CERTIFIED DEATHS BY AGE AND SEX ACCORDING TO NATIONAL LIST OF TENTH REVISION OF ICD DURING THE YEAR - 2003.
STATE: KARNATAKA**

MG/ C AT/S C	CAUSE OF DEATH	SEX	AGE GROUPS											N.S	TOTAL
			<1	1-4	5-14	15-24	25-34	35-44	45-54	55-64	65-69	70+			
1	2	3	4	5	6	7	8	9	10	11	12	13	14	15	
1	GASTRIC AND DUODENAL ULCER(K25-K27)	Male	0	0	0	5	12	31	43	29	10	40	12	182	
		Female	0	0	0	7	10	10	11	12	1	12	1	64	
2	GASTRITIS AND DUODENITIS (K29)	Male	0	0	0	4	6	4	10	8	1	7	0	40	
		Female	0	0	0	0	0	0	5	4	0	3	0	12	
3	DISEASES OF APPENDIX(K35-K38)	Male	0	0	0	29	23	57	57	63	18	30	12	289	
		Female	0	0	0	2	10	11	4	11	4	5	3	50	
4	HERNIA(K40-K46)	Male	0	0	0	0	0	0	2	11	2	15	2	32	
		Female	0	0	0	0	2	5	2	5	0	9	2	25	
5	PARALYTIC ILEUS AND INTESTINAL OBSTRUCTION WITHOUT HERNIA(K56)	Male	0	0	0	4	3	6	17	34	7	14	3	88	
		Female	0	0	1	8	3	6	13	5	5	4	0	45	
6	PERITONITIS(K65)	Male	0	2	6	17	57	59	106	74	21	51	27	420	
		Female	0	8	10	17	31	18	35	22	8	13	5	167	
7	DISEASES OF THE LIVER(K70-K76)	Male	0	12	21	66	180	527	686	390	123	159	135	2299	
		Female	0	30	15	38	58	93	103	95	38	65	34	569	
8	CHOLELITHIASIS AND CHOLECYSTITIS(K80-K81)	Male	0	0	0	0	2	0	4	7	4	4	2	23	
		Female	0	0	2	0	0	2	2	4	3	0	3	16	
9	DISORDERS OF THE PANCREAS(K85-K86)	Male	0	0	0	6	20	21	10	7	11	2	6	83	
		Female	0	0	0	0	7	1	3	4	0	3	2	20	
10	ALL OTHER DISEASES OF THE OTHER PARTS OF DIGESTIVE SYSTEM(K20-K22,K28,K30-K31,K50-K55,K57-K63,K66,K82-K83 & K90-K92)	Male	0	1	9	24	56	129	90	79	36	51	27	502	
		Female	0	0	5	20	13	19	32	25	14	19	11	158	

**TABLE -8: MEDICALLY CERTIFIED DEATHS BY AGE AND SEX ACCORDING TO NATIONAL LIST OF TENTH REVISION OF ICD DURING THE YEAR - 2003.
STATE: KARNATAKA**

MG/ C AT/S C	CAUSE OF DEATH	SEX	AGE GROUPS											N.S	TOTAL
			<1	1-4	5-14	15-24	25-34	35-44	45-54	55-64	65-69	70+			
1	2	3	4	5	6	7	8	9	10	11	12	13	14	15	
XII	DISEASES OF THE SKIN AND SUBCUTANEOUS TISSUE(L00-L98)	Male	0	0	13	14	33	46	75	55	40	103	24	403	
		Female	0	0	4	18	32	15	13	27	30	47	12	198	
		Total	0	0	17	32	65	61	88	82	70	150	36	601	
38	DISEASES OF THE SKIN AND SUBCUTANEOUS TISSUE(L00-L98)	Male	0	0	13	14	33	46	75	55	40	103	24	403	
		Female	0	0	4	18	32	15	13	27	30	47	12	198	
		Total	0	0	17	32	65	61	88	82	70	150	36	601	
1	INFECTIONS OF THE SKIN AND SUBCUTANEOUS TISSUE(L00-L98)	Male	0	0	10	12	21	39	66	38	30	76	9	301	
		Female	0	0	4	2	11	8	10	22	12	24	7	100	
2	ALL OTHER DISEASES OF THE SKIN AND SUBCUTANEOUS TISSUE(L10-L98)	Male	0	0	3	2	12	7	9	17	10	27	15	102	
		Female	0	0	0	16	21	7	3	5	18	23	5	98	
XIII	DISEASES OF THE MUSCULOSKELETAL SYSTEM AND CONNECTIVE TISSUE(M00-M99)	Male	0	0	0	12	4	7	22	9	4	13	8	79	
		Female	0	0	0	9	9	14	12	14	3	20	6	87	
		Total	0	0	0	21	13	21	34	23	7	33	14	166	
39	DISEASES OF THE MUSCULOSKELETAL SYSTEM AND CONNECTIVE TISSUE(M00-M99)	Male	0	0	0	12	4	7	22	9	4	13	8	79	
		Female	0	0	0	9	9	14	12	14	3	20	6	87	
		Total	0	0	0	21	13	21	34	23	7	33	14	166	
1	RHEUMATOID ARTHRITIS AND OTHER INFLAMMATORY POLYARTHRITIS(M05-M13)	Male	0	0	0	6	1	1	1	3	1	5	5	23	
		Female	0	0	0	4	1	8	6	13	3	18	5	58	
2	OSTEOMYELITIS(M86)	Male	0	0	0	2	0	0	2	2	2	0	0	8	
		Female	0	0	0	0	1	0	0	1	0	0	0	2	
3	ALL OTHER DISEASES OF THE MUSCULOSKELETAL SYSTEM AND CONNECTIVE TISSUE (M00-M02,M15-M43,M45-M85,M87-M99)	Male	0	0	0	4	3	6	19	4	1	8	3	48	
		Female	0	0	0	5	7	6	6	0	0	2	1	27	

**TABLE -8: MEDICALLY CERTIFIED DEATHS BY AGE AND SEX ACCORDING TO NATIONAL LIST OF TENTH REVISION OF ICD DURING THE YEAR - 2003.
STATE: KARNATAKA**

MG/ C AT/S C	CAUSE OF DEATH	SEX	AGE GROUPS											TOTAL	
			<1	1-4	5-14	15-24	25-34	35-44	45-54	55-64	65-69	70+	N.S		
1	2	3	4	5	6	7	8	9	10	11	12	13	14	15	
XIV	DISEASES OF THE GENITOURINARY SYSTEM(N00-N99)	Male	0	0	36	97	99	174	229	234	132	315	76	1392	
		Female	0	0	12	63	64	72	115	113	70	160	37	706	
		Total	0	0	48	160	163	246	344	347	202	475	113	2098	
40	DISEASES OF URINARY SYSTEM(N00-N39)	Male	0	0	36	93	94	163	223	232	128	304	71	1344	
		Female	0	0	12	57	51	67	109	111	69	159	35	670	
		Total	0	0	48	150	145	230	332	343	197	463	106	2014	
1	1	GLOMERULAR DISEASES(INCLUDING NEPHRITIC SYNDROME (N00-N07)	Male	0	0	11	14	5	6	2	6	4	2	4	54
			Female	0	0	4	5	8	1	11	7	7	3	4	50
2	2	RENAL TUBULO-INTERSTITIAL DISEASES(N10-N15)	Male	0	0	0	2	1	4	8	11	1	3	2	32
			Female	0	0	3	2	2	0	0	1	1	2	0	11
3	3	RENAL FAILURE(N17-N19)	Male	0	0	23	70	81	151	201	208	116	262	59	1171
			Female	0	0	5	48	35	59	94	97	53	142	28	561
4	4	UROLITHIASIS(N20-N23)	Male	0	0	0	0	1	1	0	0	0	0	0	2
			Female	0	0	0	0	0	0	0	0	0	0	1	1
5	5	OTHER DISORDERS OF KIDNEY AND URETER(N25-N28)	Male	0	0	0	0	1	1	0	1	0	0	0	3
			Female	0	0	0	0	2	0	0	2	0	1	1	6
6	6	ALL OTHER DISEASES OF URINARY SYSTEM(N30-N39)	Male	0	0	2	7	5	0	12	6	7	37	6	82
			Female	0	0	0	2	4	7	4	4	8	11	1	41
41	OTHER DISEASES OF THE GENITOURINARY SYSTEM(N40-N99)	Male	0	0	0	4	5	11	6	2	4	11	5	48	
		Female	0	0	0	6	13	5	6	2	1	1	2	36	
		Total	0	0	0	10	18	16	12	4	5	12	7	84	

**TABLE -8: MEDICALLY CERTIFIED DEATHS BY AGE AND SEX ACCORDING TO NATIONAL LIST OF TENTH REVISION OF ICD DURING THE YEAR - 2003.
STATE: KARNATAKA**

MG/ C AT/S C	CAUSE OF DEATH	SEX	AGE GROUPS											TOTAL
			<1	1-4	5-14	15-24	25-34	35-44	45-54	55-64	65-69	70+	N.S	
1	2	3	4	5	6	7	8	9	10	11	12	13	14	15
1	HYPERPLASIA OF PROSTATE(N40)	Male	0	0	0	0	0	0	0	0	2	3	0	5
2	ALL OTHER DISEASES OF MALE GENITAL ORGANS(N41-N50)	Male	0	0	0	4	5	11	6	2	2	8	5	43
3	SALPINGITIS AND OOPHORITIS(N70)	Female	0	0	0	0	2	0	2	0	0	0	0	4
4	ALL OTHER DISEASES OF FEMALE GENITAL ORGANS (N60-N64,N71-N76,N80-N99)	Female	0	0	0	6	11	5	4	2	1	1	2	32
XV	PREGNANCY, CHILDBIRTH AND THE PUERPERIUM (O00-O99)	Female	0	0	0	454	349	49	0	0	0	0	23	875
		Total	0	0	0	454	349	49	0	0	0	0	23	875
42	PREGNANCY WITH ABORTIVE OUTCOME (O00-O08)	Female	0	0	0	26	21	1	0	0	0	0	2	50
		Total	0	0	0	26	21	1	0	0	0	0	2	50
1	SPONTANEOUS ABORTION (O03)	Female	0	0	0	0	0	1	0	0	0	0	0	1
2	MEDICAL ABORTION(O04)	Female	0	0	0	0	0	0	0	0	0	0	0	0
3	OTHER PREGNANCIES WITH ABORTIVE OUTCOME (O00-O02 & O05-O08)	Female	0	0	0	26	21	0	0	0	0	0	2	49
43	OTHER DIRECT OBSTETRIC DEATHS (O10-O92)	Female	0	0	0	324	250	44	0	0	0	0	17	635
		Total	0	0	0	324	250	44	0	0	0	0	17	635
1	OEDEMA,PROTEINURIA AND HYPERTENSIVE DISORDERS IN PREGNANCY,CHILD BIRTH AND PUERPERIUM(O10-O16)	Female	0	0	0	84	67	11	0	0	0	0	3	165
2	INFECTIONS OF GENITOURINARY TRACT IN PREGNANCY(O23)	Female	0	0	0	0	0	0	0	0	0	0	0	0
3	OBSTRUCTED LABOUR(O64-O66)	Female	0	0	0	3	0	1	0	0	0	0	0	4

**TABLE -8: MEDICALLY CERTIFIED DEATHS BY AGE AND SEX ACCORDING TO NATIONAL LIST OF TENTH REVISION OF ICD DURING THE YEAR - 2003.
STATE: KARNATAKA**

MG/ C AT/S C	CAUSE OF DEATH	SEX	AGE GROUPS											TOTAL
			<1	1-4	5-14	15-24	25-34	35-44	45-54	55-64	65-69	70+	N.S	
1	2	3	4	5	6	7	8	9	10	11	12	13	14	15
4	COMPLICATIONS PRE-DOMINANTLY RELATED TO THE PUERPERIUM(O85-O92)	Female	0	0	0	64	42	13	0	0	0	0	1	120
5	OTHER COMPLICATIONS OF PREGNANCY AND DELIVERY (O20-O22,O24-O63,O67-O75, O80-O84)	Female	0	0	0	173	141	19	0	0	0	0	13	346
44	OTHER OBSTETRIC CONDITIONS,NOT ELSEWHERE CLASSIFIED(O95-O99)	Female	0	0	0	104	78	4	0	0	0	0	4	190
		Total	0	0	0	104	78	4	0	0	0	0	4	190
1	INDIRECT OBSTETRIC DEATHS(O98-O99)	Female	0	0	0	104	78	4	0	0	0	0	4	190
2	ALL OTHER OBSTETRIC CONDITIONS,NOT ELSEWHERE CLASSIFIED (O95-O97)	Female	0	0	0	0	0	0	0	0	0	0	0	0
XVI	CERTAIN CONDITIONS ORIGINATING IN THE PERINATAL PERIOD(P00-P96)	Male	5043	0	0	0	0	0	0	0	0	0	0	5043
		Female	3083	0	0	0	0	0	0	0	0	0	0	3083
		Total	8126	0	0	0	0	0	0	0	0	0	0	8126
45	CERTAIN CONDITIONS ORIGINATING IN THE PERINATAL PERIOD (P00-P96)	Male	5043	0	0	0	0	0	0	0	0	0	0	5043
		Female	3083	0	0	0	0	0	0	0	0	0	0	3083
		Total	8126	0	0	0	0	0	0	0	0	0	0	8126
1	SLOW FETAL GROWTH,FETAL MALNUTRITION AND IMMATURITY (P05-P07)	Male	1919	0	0	0	0	0	0	0	0	0	0	1919
		Female	1264	0	0	0	0	0	0	0	0	0	0	1264
2	BIRTH TRAUMA(P10-P15)	Male	4	0	0	0	0	0	0	0	0	0	0	4
		Female	5	0	0	0	0	0	0	0	0	0	0	5
3	HYPOXIA,BIRTH ASPHYXIA AND OTHER RESPIRATORY CONDITIONS(P20-P28)	Male	1707	0	0	0	0	0	0	0	0	0	0	1707
		Female	1009	0	0	0	0	0	0	0	0	0	0	1009

**TABLE -8: MEDICALLY CERTIFIED DEATHS BY AGE AND SEX ACCORDING TO NATIONAL LIST OF TENTH REVISION OF ICD DURING THE YEAR - 2003.
STATE: KARNATAKA**

MG/ C AT/S C	CAUSE OF DEATH	SEX	AGE GROUPS											TOTAL
			<1	1-4	5-14	15-24	25-34	35-44	45-54	55-64	65-69	70+	N.S	
1	2	3	4	5	6	7	8	9	10	11	12	13	14	15
4	HAEMOLYTIC DISEASE OF FETUS AND NEW-BORN (P55)	Male	4	0	0	0	0	0	0	0	0	0	0	4
		Female	4	0	0	0	0	0	0	0	0	0	0	4
5	OTHER PERINATAL JAUNDICE(P58-P59)	Male	56	0	0	0	0	0	0	0	0	0	0	56
		Female	33	0	0	0	0	0	0	0	0	0	0	33
6	ALL OTHER CONDITIONS ORIGINATING IN THE PERINATAL PERIOD(P00-P04,P08,P29-P54, P56-P57,P60-P96)	Male	1353	0	0	0	0	0	0	0	0	0	0	1353
		Female	768	0	0	0	0	0	0	0	0	0	0	768
XVII	CONGENITAL MALFORMATIONS,DEFORMATIONS & CHROMOSOMAL ABNORMALITIES(Q00-Q99)	Male	381	88	50	0	0	0	0	0	0	0	0	519
		Female	227	59	35	0	0	0	0	0	0	0	0	321
		Total	608	147	85	0	0	0	0	0	0	0	0	840
46	CONGENITAL MALFORMATIONS,DEFORMATIONS & CHROMOSOMAL ABNORMALITIES(Q00-Q99)	Male	381	88	50	0	0	0	0	0	0	0	0	519
		Female	227	59	35	0	0	0	0	0	0	0	0	321
		Total	608	147	85	0	0	0	0	0	0	0	0	840
1	SPINA BIFIDA(Q05)	Male	8	2	0	0	0	0	0	0	0	0	0	10
		Female	8	0	0	0	0	0	0	0	0	0	0	8
2	CONGENITAL MALFORMATIONS OF THE CIRCULATORY SYSTEM(Q20-Q28)	Male	221	50	29	0	0	0	0	0	0	0	0	300
		Female	134	43	15	0	0	0	0	0	0	0	0	192
3	CLEFT LIP AND CLEFT PALATE(Q35-Q37)	Male	0	0	0	0	0	0	0	0	0	0	0	0
		Female	0	1	0	0	0	0	0	0	0	0	0	1
4	ALL OTHER CONGENITAL MALFORMATIONS,DEFORMATIONS & CHROMOSOMAL ABNORMALITIES ELSEWHERE CLASSIFIED (Q00-Q04,Q06-Q07,Q10-Q18,Q30-Q34,Q38-Q99)	Male	152	36	21	0	0	0	0	0	0	0	0	209
		Female	85	15	20	0	0	0	0	0	0	0	0	120
XVIII	SYMPTOMS,SIGNS AND ABNORMAL CLINICAL & LABORATORY FINDINGS,NOT ELSEWHERE CLASSIFIED (R00-R99)	Male	0	26	46	114	189	239	388	428	225	867	189	2711
		Female	0	12	32	113	122	96	117	178	102	694	93	1559
		Total	0	38	78	227	311	335	505	606	327	1561	282	4270

**TABLE -8: MEDICALLY CERTIFIED DEATHS BY AGE AND SEX ACCORDING TO NATIONAL LIST OF TENTH REVISION OF ICD DURING THE YEAR - 2003.
STATE: KARNATAKA**

MG/ C AT/S C	CAUSE OF DEATH	SEX	AGE GROUPS											TOTAL
			<1	1-4	5-14	15-24	25-34	35-44	45-54	55-64	65-69	70+	N.S	
1	2	3	4	5	6	7	8	9	10	11	12	13	14	15
47	SYMPTOMS,SIGNS AND ABNORMAL CLINICAL & LABORATORY FINDINGS,NOT ELSEWHERE CLASSIFIED (R00-R99)	Male	0	26	46	114	189	239	388	428	225	867	189	2711
		Female	0	12	32	113	122	96	117	178	102	694	93	1559
		Total	0	38	78	227	311	335	505	606	327	1561	282	4270
1	ABDOMINAL AND PELVIC PAIN(R10)	Male	0	0	0	4	2	0	5	2	0	5	0	18
		Female	0	0	0	0	0	0	0	0	0	0	0	0
2	ASCITES(R18)	Male	0	0	0	0	0	0	4	1	2	0	0	7
		Female	0	0	0	0	0	2	0	0	0	0	0	2
3	SOMNOLENCE, STUPOR AND COMA(R40)	Male	0	0	0	0	0	1	2	0	10	0	0	13
		Female	0	0	0	6	4	0	0	2	0	0	2	14
4	FEVER OF UNKNOWN ORIGIN(R50)	Male	0	0	6	0	7	9	3	4	2	6	0	37
		Female	0	0	4	1	0	2	2	4	0	1	0	14
5	SENILITY(R54)	Male	0	0	0	0	0	0	0	0	47	362	19	428
		Female	0	0	0	0	0	0	0	0	21	381	21	423
6	SYNCOPE AND COLLAPSE(R55)	Male	0	0	0	0	0	0	0	0	0	0	0	0
		Female	0	0	0	0	0	0	0	0	0	0	0	0
7	CONVULSIONS, NOT ELSEWHERE CLASSIFIED(R56)	Male	0	1	1	6	12	15	21	20	9	23	12	120
		Female	0	2	0	7	8	9	9	7	2	15	4	63
8	SHOCK, NOT ELSEWHERE CLASSIFIED(R57)	Male	0	0	0	1	19	19	45	56	20	43	10	213
		Female	0	0	0	1	34	11	4	16	16	19	6	107
9	ALL OTHER SYMPTOMS,SIGNS AND ABNORMAL CLINICAL & LABORATORY FINDINGS,NOT ELSEWHERE CLASSIFIED (R00-R09,R11-R17,R19-R39,R41-R49,R51-R53,R58-R99)	Male	0	25	39	103	149	195	308	345	135	428	148	1875
		Female	0	10	28	98	76	72	102	149	63	278	60	936

**TABLE -8: MEDICALLY CERTIFIED DEATHS BY AGE AND SEX ACCORDING TO NATIONAL LIST OF TENTH REVISION OF ICD DURING THE YEAR - 2003.
STATE: KARNATAKA**

MG/ C AT/S C	CAUSE OF DEATH	SEX	AGE GROUPS											TOTAL
			<1	1-4	5-14	15-24	25-34	35-44	45-54	55-64	65-69	70+	N.S	
1	2	3	4	5	6	7	8	9	10	11	12	13	14	15
XIX	INJURY, POISONING AND CERTAIN OTHER COSEQUENCES OF EXTERNAL CAUSES(S00-T98)	Male	21	91	199	1091	1281	1106	871	461	173	297	381	5972
		Female	10	54	162	1093	813	469	260	155	69	164	212	3461
		Total	31	145	361	2184	2094	1575	1131	616	242	461	593	9433
48	FRACTURES(S02,S12,S22,S32,S42,S52,S62,S72,S82,S92, T10,T12,T02,T08)	Male	0	1	5	44	37	38	55	33	13	28	5	259
		Female	0	2	2	2	1	2	11	5	4	32	6	67
		Total	0	3	7	46	38	40	66	38	17	60	11	326
1	FRACTURE OF SKULL AND FACIAL BONES(S02)	Male	0	0	1	0	1	4	3	0	0	0	0	9
		Female	0	0	1	0	0	0	0	0	0	0	0	1
2	FRACTURE OF NECK, THORAX OR PELVIS(S12,S22,S32 & T08)	Male	0	0	3	25	22	17	27	9	5	6	1	115
		Female	0	2	0	2	0	2	7	0	1	7	2	23
3	FRACTURE OF UPPER LIMB(S42,S52,S62 & T10)	Male	0	0	0	0	1	0	2	0	0	0	0	3
		Female	0	0	0	0	0	0	0	0	0	2	0	2
4	FRACTURE OF LOWER LIMB(S72,S82,S92 & T12)	Male	0	1	1	16	13	15	22	24	8	22	4	126
		Female	0	0	1	0	1	0	3	5	3	23	4	40
5	FRACTURES INVOLVING MULTIPLE BODY REGIONS, AND OF UNSPECIFIED BODY REGION(T02)	Male	0	0	0	3	0	2	1	0	0	0	0	6
		Female	0	0	0	0	0	0	1	0	0	0	0	1
49	DISLOCATIONS, SPRAINS AND STRAINS OF SPECIFIED AND MULTIPLE BODY REGIONS (S03,S13,S23,S33,S43,S53,S63, S73,S83,S93,T03)	Male	0	0	0	1	0	1	0	3	0	1	0	6
		Female	0	0	0	0	0	0	0	0	0	0	0	0
		Total	0	0	0	1	0	1	0	3	0	1	0	6
50	INTRACRANIAL AND INTERNAL INJURIES INCLUDING NERVES (S04,S06,S14,S26-S27,S34,S36-S37,S44,S54, S64,S74,S84 & S94)	Male	0	4	17	51	73	81	69	33	11	29	32	400
		Female	0	2	9	14	5	11	22	5	3	7	9	87
		Total	0	6	26	65	78	92	91	38	14	36	41	487

TABLE -8: MEDICALLY CERTIFIED DEATHS BY AGE AND SEX ACCORDING TO NATIONAL LIST OF TENTH REVISION OF ICD DURING THE YEAR - 2003.
STATE: KARNATAKA

MG/ C AT/S C	CAUSE OF DEATH	SEX	AGE GROUPS											TOTAL
			<1	1-4	5-14	15-24	25-34	35-44	45-54	55-64	65-69	70+	N.S	
1	2	3	4	5	6	7	8	9	10	11	12	13	14	15
51	CRUSHING INJURIES AND TRAUMATIC AMPUTATIONS OF SPECIFIED AND MULTIPLE BODY REGIONS (S07-S08, S17-S18,S28,S38,S47-S48,S57,S77-S78,S87-S88,S97-S98, T04-T05,S58,S67-S68)	Male	0	0	1	2	0	4	4	1	0	2	1	15
		Female	0	0	0	0	0	1	0	1	1	0	0	3
		Total	0	0	1	2	0	5	4	2	1	2	1	18
52	OTHER INJURIES OF SPECIFIED,UNSPECIFIED AND MULTIPLE BODY REGIONS(S00-S01,SS15-S16,S19-S21,S25, S29-S31,S35,S39-S41,S45-S46,S49-S51,S55-S56,S59-S61,S65-S66,S69-S71,S75-S76,S79-S81,S85-S86,S90-S91,S95-S96,S99,T00-T01,T06-T07,T09,T11 & T13-T14)	Male	14	29	62	253	323	336	262	165	80	128	141	1793
		Female	2	10	40	26	34	58	44	44	32	34	18	342
		Total	16	39	102	279	357	394	306	209	112	162	159	2135
53	EFFECTS OF FOREIGN BODY ENTERING THROUGH NATURAL ORIFICE(T15-T19)	Male	0	2	2	0	0	1	1	0	0	0	0	6
		Female	0	2	1	0	0	0	0	0	0	0	1	4
		Total	0	4	3	0	0	1	1	0	0	0	1	10
54	BURNS AND CORROSIONS(T20-T32)	Male	3	36	35	117	177	128	80	19	6	18	53	672
		Female	7	18	59	622	531	228	85	39	15	52	123	1779
		Total	10	54	94	739	708	356	165	58	21	70	176	2451
55	POISONINGS BY DRUGS AND BIOLOGICAL SUBSTANCES,AND TOXIC EFFECTS OF SUBSTANCES CHIEFLY NONMEDICINAL AS TO SOURCE(T36-T50 &T51-T65)	Male	4	15	73	591	645	497	385	198	60	77	144	2689
		Female	1	20	51	408	228	158	93	54	13	35	49	1110
		Total	5	35	124	999	873	655	478	252	73	112	193	3799
56	OTHER AND UNSPECIFIED EFFECTS OF EXTERNAL CAUSES AND CERTAIN EARLY COMPLICATIONS OF TRAUMA (T33-T35,T66-T78 & T79)	Male	0	4	3	28	20	15	10	6	2	7	5	100
		Female	0	0	0	20	13	10	3	6	0	2	5	59
		Total	0	4	3	48	33	25	13	12	2	9	10	159
57	COMPLICATIONS OF SURGICAL AND MADICAL CARE NOT ELSEWHERE CLASSIFIED(T80-T88)	Male	0	0	1	2	1	3	2	2	0	7	0	18
		Female	0	0	0	1	1	1	2	1	1	2	1	10
		Total	0	0	1	3	2	4	4	3	1	9	1	28
58	LATE EFFECTS OF INJURIES,OF POISONING AND OF OTHER CONSEQUENCES OF EXTERNAL CAUSES(T90-T98)	Male	0	0	0	2	5	2	3	1	1	0	0	14
		Female	0	0	0	0	0	0	0	0	0	0	0	0
		Total	0	0	0	2	5	2	3	1	1	0	0	14

**TABLE -8: MEDICALLY CERTIFIED DEATHS BY AGE AND SEX ACCORDING TO NATIONAL LIST OF TENTH REVISION OF ICD DURING THE YEAR - 2003.
STATE: KARNATAKA**

MG/ C AT/S C	CAUSE OF DEATH	SEX	AGE GROUPS											TOTAL
			<1	1-4	5-14	15-24	25-34	35-44	45-54	55-64	65-69	70+	N.S	
1	2	3	4	5	6	7	8	9	10	11	12	13	14	15
XX	EXTERNAL CAUSES OF MORBIDITY AND MORTALITY (V01-Y89)	Male	21	91	199	1091	1280	1106	873	461	173	297	381	5973
		Female	10	54	162	1093	814	469	258	155	69	164	212	3460
		Total	31	145	361	2184	2094	1575	1131	616	242	461	593	9433
E48	TRANSPORT ACCIDENTS(V01-V99)	Male	4	16	58	251	323	311	259	158	61	128	138	1707
		Female	0	12	33	31	28	51	54	38	27	31	22	327
		Total	4	28	91	282	351	362	313	196	88	159	160	2034
1	RAILWAY ACCIDENTS(V05,V15,V80.6,V81)	Male	0	0	2	4	2	8	4	1	1	0	3	25
		Female	0	0	0	0	0	2	0	0	1	0	0	3
2	MOTOR VEHICLE TRAFFIC ACCIDENTS(V02-V04,V09.2-V09.3 V12-V14,V20-V29,V30-V39,V40-V49,V50-V59,V60-V69,V70-V79, V80.3-V80.5,V82.1,V87.0-V87.5&V87.7-V87.8,V88.0-V88.5 &V89.2)	Male	4	15	56	247	320	303	255	157	60	126	135	1678
		Female	0	12	33	31	28	49	54	38	26	31	22	324
3	OTHER ROAD VEHICLE ACCIDENTS(V01,V06,V09.0-V09.1,V10-V11, V16-V18,V80.0-V80.V82.0,V82.2-V82.9,V87.9,V88.0-V88.5, V88.7-V88.9 & V89.0-V89.1)	Male	0	1	0	0	0	0	0	0	0	0	0	1
		Female	0	0	0	0	0	0	0	0	0	0	0	0
4	WATER TRANSPORT ACCIDENTS(V90-V94)	Male	0	0	0	0	0	0	0	0	0	0	0	0
		Female	0	0	0	0	0	0	0	0	0	0	0	0
5	AIR AND SPACE TRANSPORT ACCIDENTS(V95-V97)	Male	0	0	0	0	0	0	0	0	0	0	0	0
		Female	0	0	0	0	0	0	0	0	0	0	0	0
6	ALL OTHER TRANSPORT ACCIDENTS(V09.1,V09.9,V19,V83-V86, V89.3,V89.9 & V98-V99)	Male	0	0	0	0	1	0	0	0	0	2	0	3
		Female	0	0	0	0	0	0	0	0	0	0	0	0
E49	ACCIDENTAL FALLS(W00-W19)	Male	4	5	11	12	26	41	31	23	13	12	7	185
		Female	0	0	10	7	1	4	3	2	4	19	0	50
		Total	4	5	21	19	27	45	34	25	17	31	7	235

**TABLE -8: MEDICALLY CERTIFIED DEATHS BY AGE AND SEX ACCORDING TO NATIONAL LIST OF TENTH REVISION OF ICD DURING THE YEAR - 2003.
STATE: KARNATAKA**

MG/ C AT/S C	CAUSE OF DEATH	SEX	AGE GROUPS											N.S	TOTAL
			<1	1-4	5-14	15-24	25-34	35-44	45-54	55-64	65-69	70+			
1	2	3	4	5	6	7	8	9	10	11	12	13	14	15	
E50	ACCIDENTAL DROWING AND SUBMERSION(W65-W74)	Male	0	2	1	7	0	0	1	1	0	0	1	13	
		Female	0	0	0	0	0	2	1	3	0	0	0	6	
		Total	0	2	1	7	0	2	2	4	0	0	1	19	
E51	EXPOSURE TO SMOKE, FIRE AND FLAMES(X00-X09)	Male	2	36	33	103	158	111	66	14	6	19	48	596	
		Female	7	18	63	556	469	202	74	38	15	49	107	1598	
		Total	9	54	96	659	627	313	140	52	21	68	155	2194	
E52	ACCIDENTAL POISONING BY AND EXPOSURE TO NOXIOUS SUBSTANCES(X40-X49)	Male	5	6	22	391	437	309	239	123	32	50	100	1714	
		Female	1	9	30	266	143	88	49	23	8	17	37	671	
		Total	6	15	52	657	580	397	288	146	40	67	137	2385	
E53	INTENTIONAL SELF-HARM(SUICIDE-ATTEMPTED)(X60-X84)	Male	0	0	5	164	180	140	107	58	18	14	34	720	
		Female	0	0	0	166	125	64	25	15	4	9	20	428	
		Total	0	0	5	330	305	204	132	73	22	23	54	1148	
E54	ASSAULT(HOMICIDE)(X85-Y09)	Male	6	2	2	20	12	28	23	8	7	3	4	115	
		Female	2	0	4	8	9	10	5	0	0	4	3	45	
		Total	8	2	6	28	21	38	28	8	7	7	7	160	
E55	OTHER VIOLENCE(Y10-Y36)	Male	0	0	2	23	29	39	21	14	3	3	10	144	
		Female	0	1	3	28	9	14	5	4	1	7	8	80	
		Total	0	1	5	51	38	53	26	18	4	10	18	224	
1	EVENT OF UNDERTERMINED INTENT(Y10-Y34)	Male	0	0	2	23	29	39	21	14	3	3	10	144	
		Female	0	1	3	28	9	14	5	4	1	7	8	80	
2	LEGAL INTERVENTION(Y35)	Male	0	0	0	0	0	0	0	0	0	0	0	0	
		Female	0	0	0	0	0	0	0	0	0	0	0	0	
3	OPERATIONS OF WAR(Y36)	Male	0	0	0	0	0	0	0	0	0	0	0	0	
		Female	0	0	0	0	0	0	0	0	0	0	0	0	

**TABLE -8: MEDICALLY CERTIFIED DEATHS BY AGE AND SEX ACCORDING TO NATIONAL LIST OF TENTH REVISION OF ICD DURING THE YEAR - 2003.
STATE: KARNATAKA**

MG/ C AT/S C	CAUSE OF DEATH	SEX	AGE GROUPS											TOTAL
			<1	1-4	5-14	15-24	25-34	35-44	45-54	55-64	65-69	70+	N.S	
1	2	3	4	5	6	7	8	9	10	11	12	13	14	15
E56	COMPLICATIONS OF MEDICAL AND SURGICAL CARE(Y40-Y84)	Male	0	0	2	1	0	2	4	2	0	8	0	19
		Female	0	0	0	2	0	0	4	2	0	1	1	10
		Total	0	0	2	3	0	2	8	4	0	9	1	29
1	DRUGS, MEDICAMENTS AND BIOLOGICAL SUBSTANCES CAUSING ADVERSE EFFECTS IN THERAPEUTIC USE (Y40-Y59)	Male	0	0	1	0	0	0	1	0	0	3	0	5
		Female	0	0	0	0	0	0	4	0	0	0	0	4
2	MISADVENTURES DURING SURGICAL AND MEDICAL CARE, ADVERSE INCIDENTS IN DIAGNOSTIC & THERAPEUTIC USE, ABNORMAL REACTIONS AND LATE COMPLICATIONS (Y60-Y69, Y70-Y82 & Y83-Y84)	Male	0	0	1	1	0	2	3	2	0	5	0	14
		Female	0	0	0	2	0	0	0	2	0	1	1	6
E57	OTHER EXTERNAL CAUSES OF ACCIDENTAL INJURY, NOT ELSEWHERE CLASSIFIED(W20-W64,W75-W99, X10-X39,X50-X59)	Male	0	24	63	119	115	125	122	60	33	60	39	760
		Female	0	14	19	29	30	34	38	30	10	27	14	245
		Total	0	38	82	148	145	159	160	90	43	87	53	1005
1	ACCIDENTS CAUSED BY MACHINERY, AND BY CUTTING PIERCING INSTRUMENTS(W24-W31)	Male	0	0	0	0	0	0	0	0	0	0	0	0
		Female	0	0	0	0	0	0	0	0	0	0	0	0
2	ACCIDENTS CAUSED BY FIREARM MISSILE(W32-W34)	Male	0	0	0	0	0	0	0	0	0	0	0	0
		Female	0	0	0	0	0	0	0	0	0	0	0	0
3	BITES OF SNAKES AND OTHER VENOMOUS ANIMALS(X20-X27)	Male	0	9	48	37	38	30	32	14	9	13	11	241
		Female	0	10	15	14	17	11	21	14	0	6	3	111
4	SUN STROKE(X32)	Male	0	0	0	0	0	0	0	0	0	0	0	0
		Female	0	0	0	0	0	0	0	0	0	0	0	0
5	ALL OTHER ACCIDENTS INCLUDING LATE EFFECTS(W20-W23, W35-W64,W75-W99X10-X19,X28-X29,X30-X31, X33-X39 & X50-X59)	Male	0	15	15	82	77	95	90	46	24	47	28	519
		Female	0	4	4	15	13	23	17	16	10	21	11	134

**TABLE -8: MEDICALLY CERTIFIED DEATHS BY AGE AND SEX ACCORDING TO NATIONAL LIST OF TENTH REVISION OF ICD DURING THE YEAR - 2003.
STATE: KARNATAKA**

MG/ C AT/S C	CAUSE OF DEATH	SEX	AGE GROUPS											TOTAL	
			<1	1-4	5-14	15-24	25-34	35-44	45-54	55-64	65-69	70+	N.S		
1	2	3	4	5	6	7	8	9	10	11	12	13	14	15	
E58	LATE EFFECTS OF EXTERNAL CAUSES OF MORBIDITY AND MORTALITY(Y85-Y89)	Male	0	0	0	0	0	0	0	0	0	0	0	0	0
		Female	0	0	0	0	0	0	0	0	0	0	0	0	0
		Total	0	0	0	0	0	0	0	0	0	0	0	0	0
	ALL CAUSES(MAJOR GROUP I TO XIX)	MALE	5819	857	983	2552	4074	5911	8352	8086	3886	8824	3062	52406	
		FEMALE	3559	749	811	2785	2827	2466	3182	3584	1991	5460	1366	28780	
		TOTAL	9378	1606	1794	5337	6901	8377	11534	11670	5877	14284	4428	81186	

Table – 9

Percentage distribution of leading major cause groups of deaths during
1993 to 2003.

Year	Leading Major Cause groups of Deaths (As per ICD – 10)								
	IX	I	XIX	XVI	X	XI	XVIII	Others	Total
1993	21.53	16.15	15.55	11.55	6.43	5.33	2.72	20.74	100.00
1994	21.93	14.79	15.97	10.40	6.23	6.04	3.40	21.24	100.00
1995	21.20	14.60	16.4	10.30	6.50	6.30	3.90	20.80	100.00
1996	21.10	14.40	15.80	10.20	7.50	6.40	4.10	20.50	100.00
1997	22.00	14.60	16.0	10.90	6.10	6.5	4.40	19.50	100.00
1998	22.10	15.5	15.3	9.30	6.40	6.6	4.60	20.20	100.00
1999	21.60	17.30	15.40	9.30	6.70	6.30	4.40	19.00	100.00
2000	26.31	15.16	9.21	10.27	6.42	7.25	5.67	19.71	100.00
2001	24.98	13.12	15.03	10.49	5.04	6.15	5.03	20.16	100.00
2002	25.32	12.32	13.63	10.39	5.22	6.26	5.49	21.37	100.00
2003	25.56	12.32	11.62	10.01	5.52	6.29	5.26	23.42	100.00

Note: 'Others' include the remaining major cause groups.

IX – Diseases of the Circulatory System

I - Certain Infectious and Parasitic diseases

XIX – Injury, Poisoning & Certain other consequences of external causes

XVI – Certain conditions originating in the Perinatal period

X – Diseases of the Respiratory system

XI – Diseases of the digestive system

XVIII – Symptoms signs and abnormal clinical & Laboratory findings NEC

Trends in leading major cause groups of deaths-1993-2003

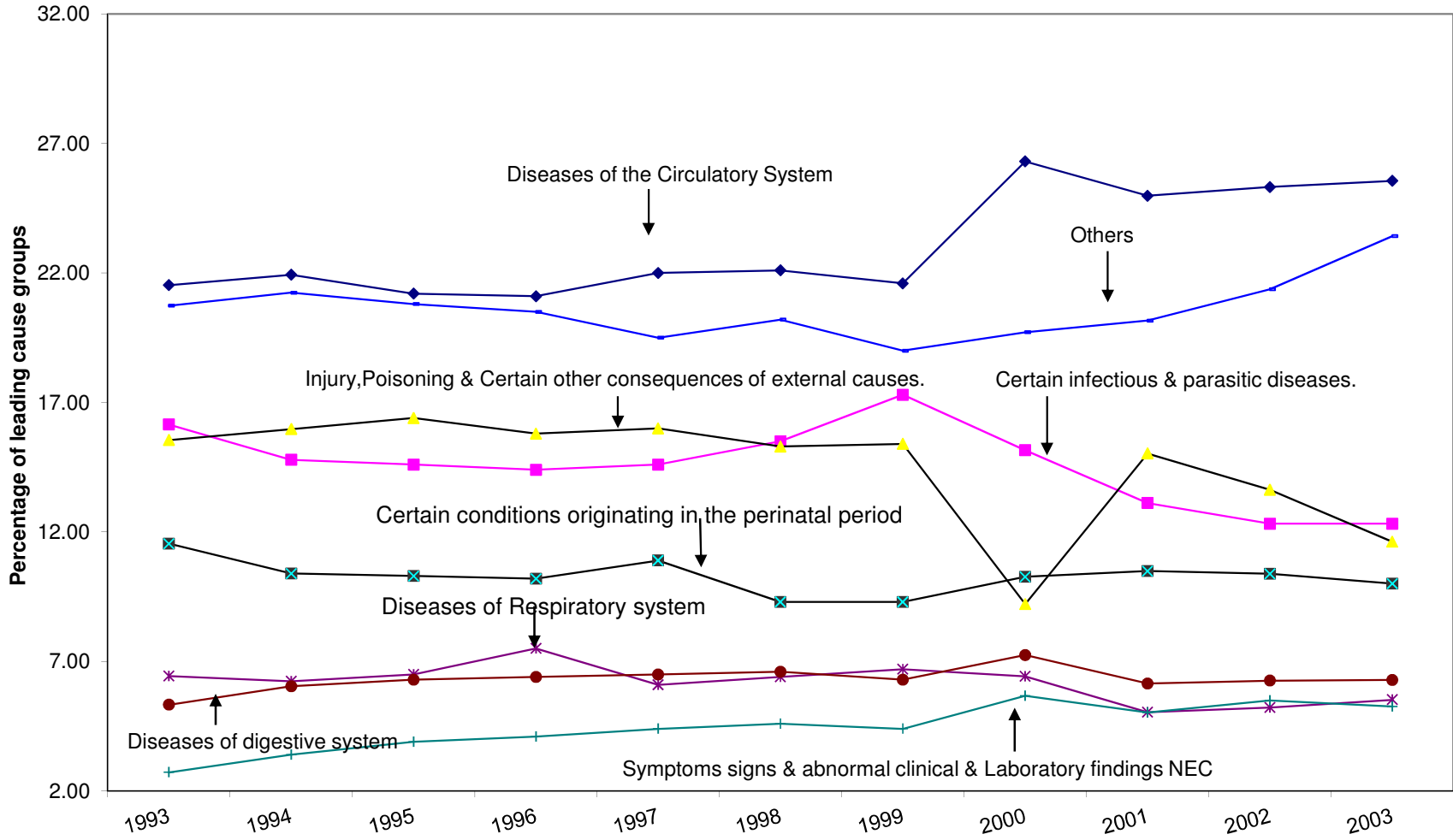
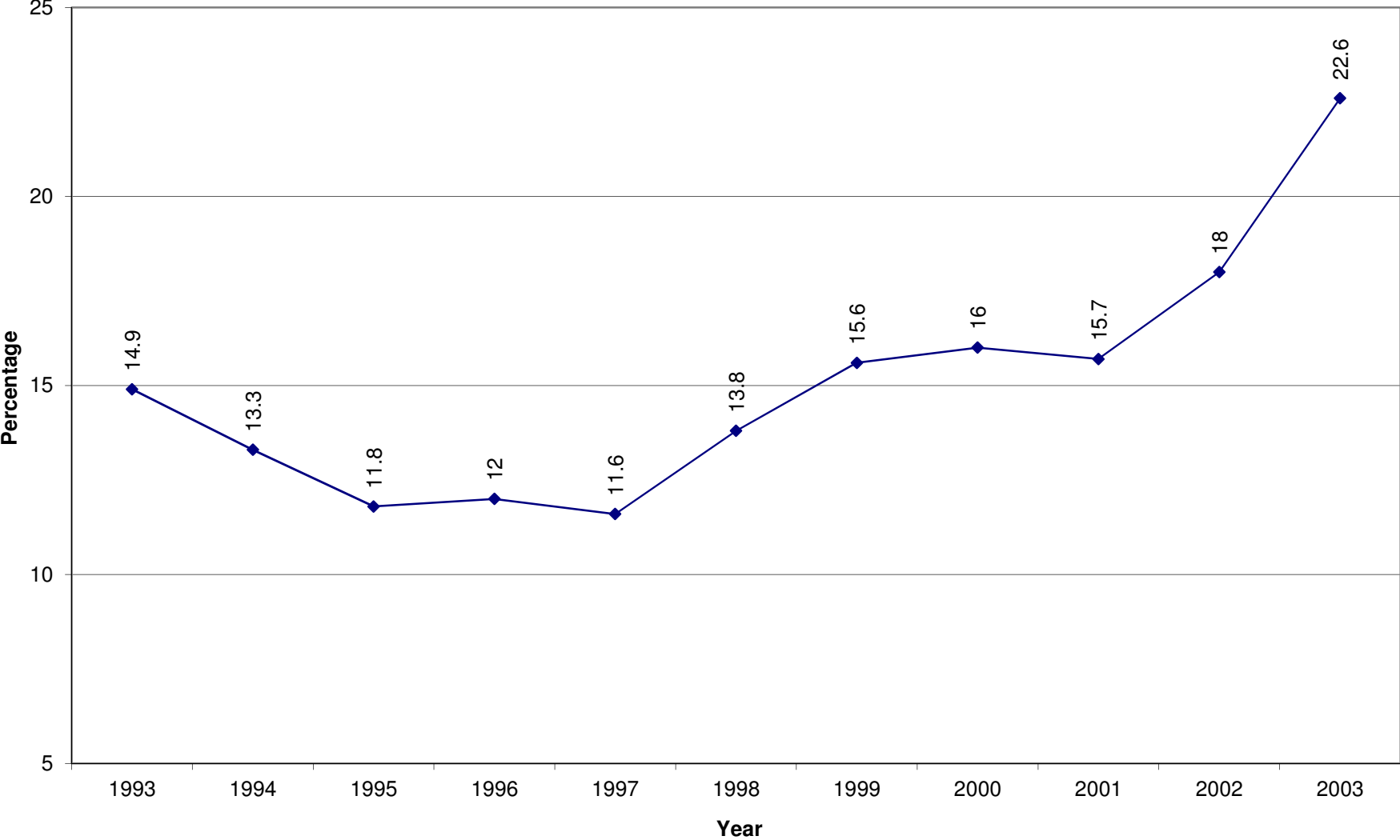


TABLE - 10**Growth in the MCCD in Karnataka**

Year	Total No. of Registered Deaths	Medically Certified Deaths	Percentage of Total Registered Deaths
1993	257133	38281	14.9
1994	282180	37511	13.3
1995	325279	38241	11.8
1996	336535	40291	12.0
1997	350264	40523	11.6
1998	374400	51598	13.8
1999	346451	54203	15.6
2000	351736	56360	16.0
2001	365181	57475	15.7
2002	355662	64022	18.0
2003	359661	81186	22.6

Trends in Medically Certified deaths to the total registered deaths



Annexure

FORM NO. 4/4A

(See Rule 7)

MEDICAL CERTIFICATE OF CAUSE OF DEATH

(Hospital in-patients/non-institutional deaths. Not to be used for still births)

To be sent to Registrar along with Form No.2 (Death Report)

Name of the Hospital.....

I hereby certify that the person whose particulars are given below died in the hospital in Ward No.....on.....

at.....A.M./P.M.

Name of the Deceased	For use of Statistical Office
----------------------	----------------------------------

Sex	Age at Death			
	If 1 year or more, age in Years	If less than 1 year, age in Months	If less than one month, age in Days	If less than one day, age in Hours
1. Male				
2. Female				

CAUSE OF DEATH		Interval between on set & death approx
I		
Immediate Cause State the disease, injury or complication which caused death, not the mode of dying such as heart failure, asthenia, etc.	(a) Due to (or as a consequences of)
Antecedent Cause Morbid conditions, if any, giving rise to the above Cause, stating underlying conditions last	(b) Due to (or as a consequences of)
	(c)

II Other significant conditions contributing to the death but not related to the disease or conditions causing it
--	-------	-------

<u>Manner of death</u>	How did the injury occur?
1. Natural 2. Accident 3. Suicide 4.Homicide	
5. Pending investigation	
If deceased was a female, was pregnancy the death associated with?	1. Yes 2. No
If yes, was there a delivery?	1.Yes 2.No.

Name and signature of the Medical Attendant certifying the cause of death
Date of verification.....

SEE REVERSE FOR INSTRUCTION

(To be detached and handed over to the relative of the deceased).

Certified that Shri/Smt/Kum.....S/W/D/of Shri

R/O.....was admitted to the hospital on and expired on

Doctor.....
(Medical Supdt
Name of the hospital)

Note: Except manner of death given in Form No-4, there will be no change in the content of Form No-4A.